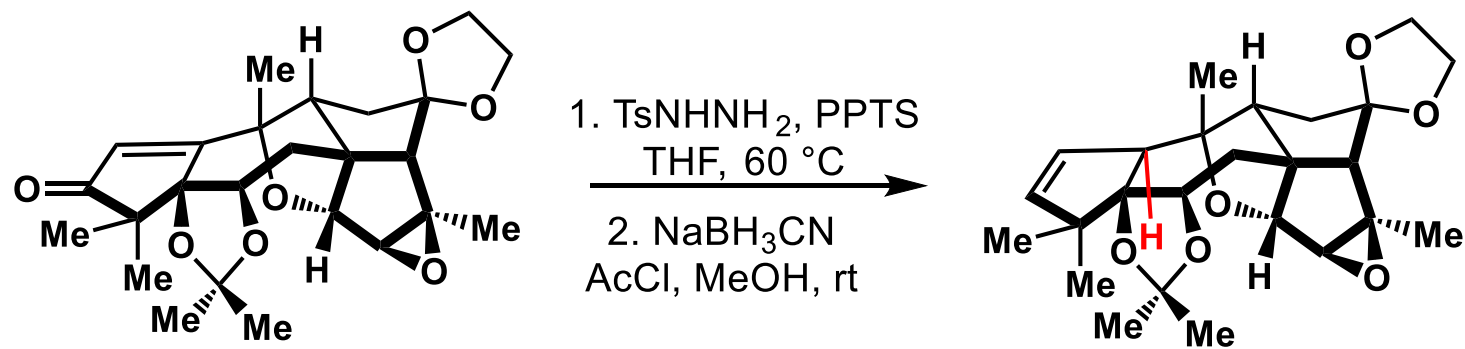
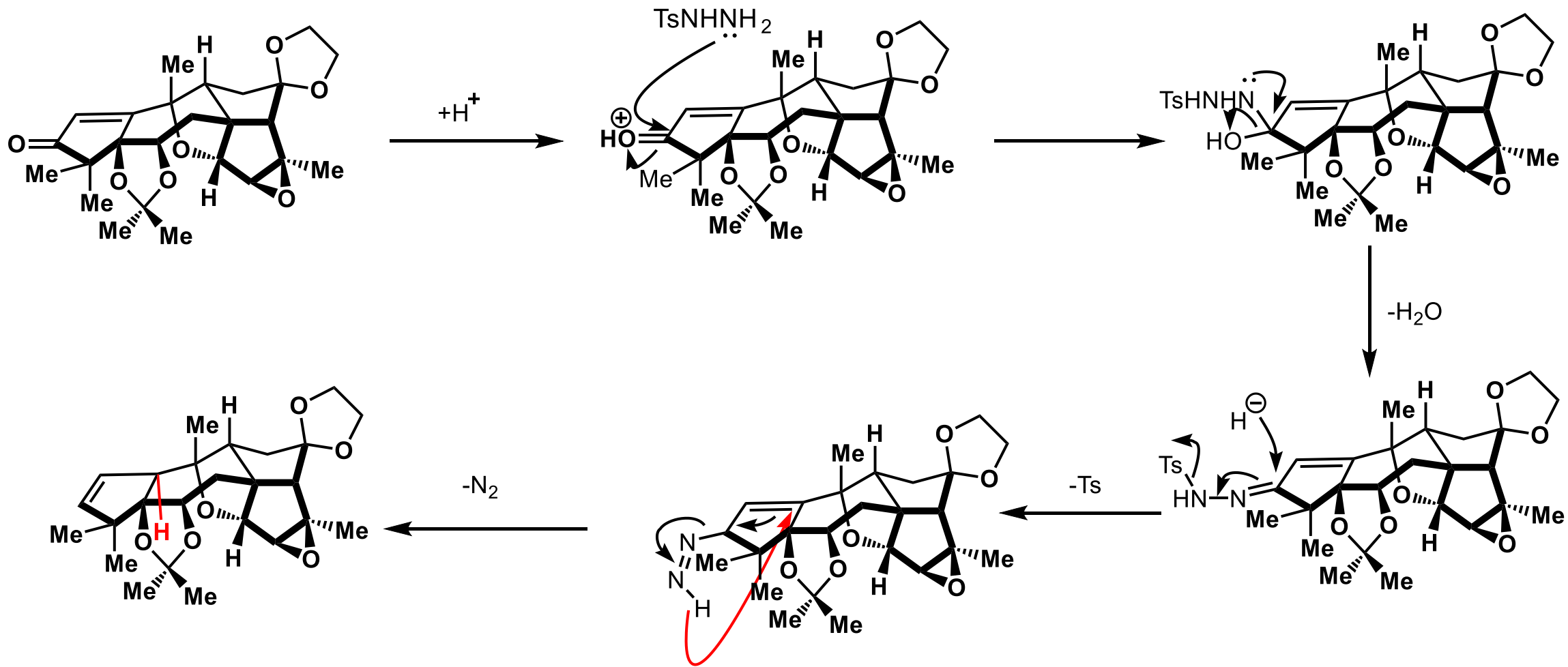
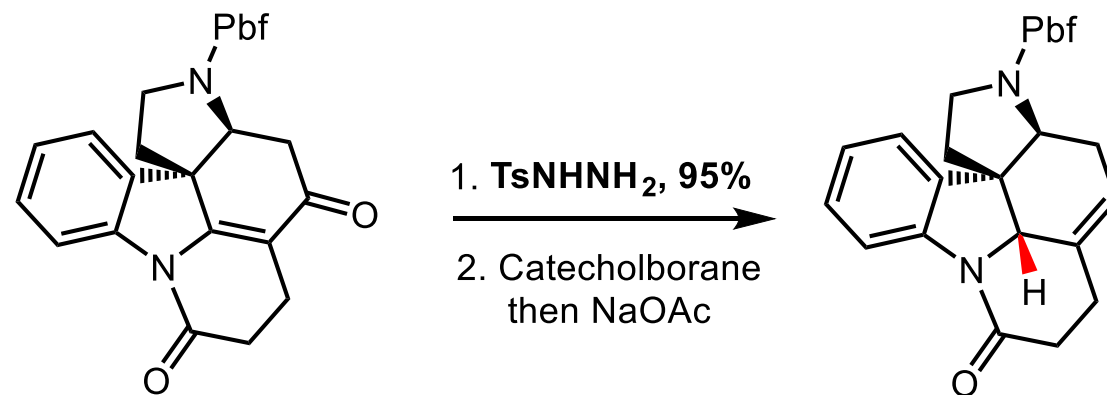


1.

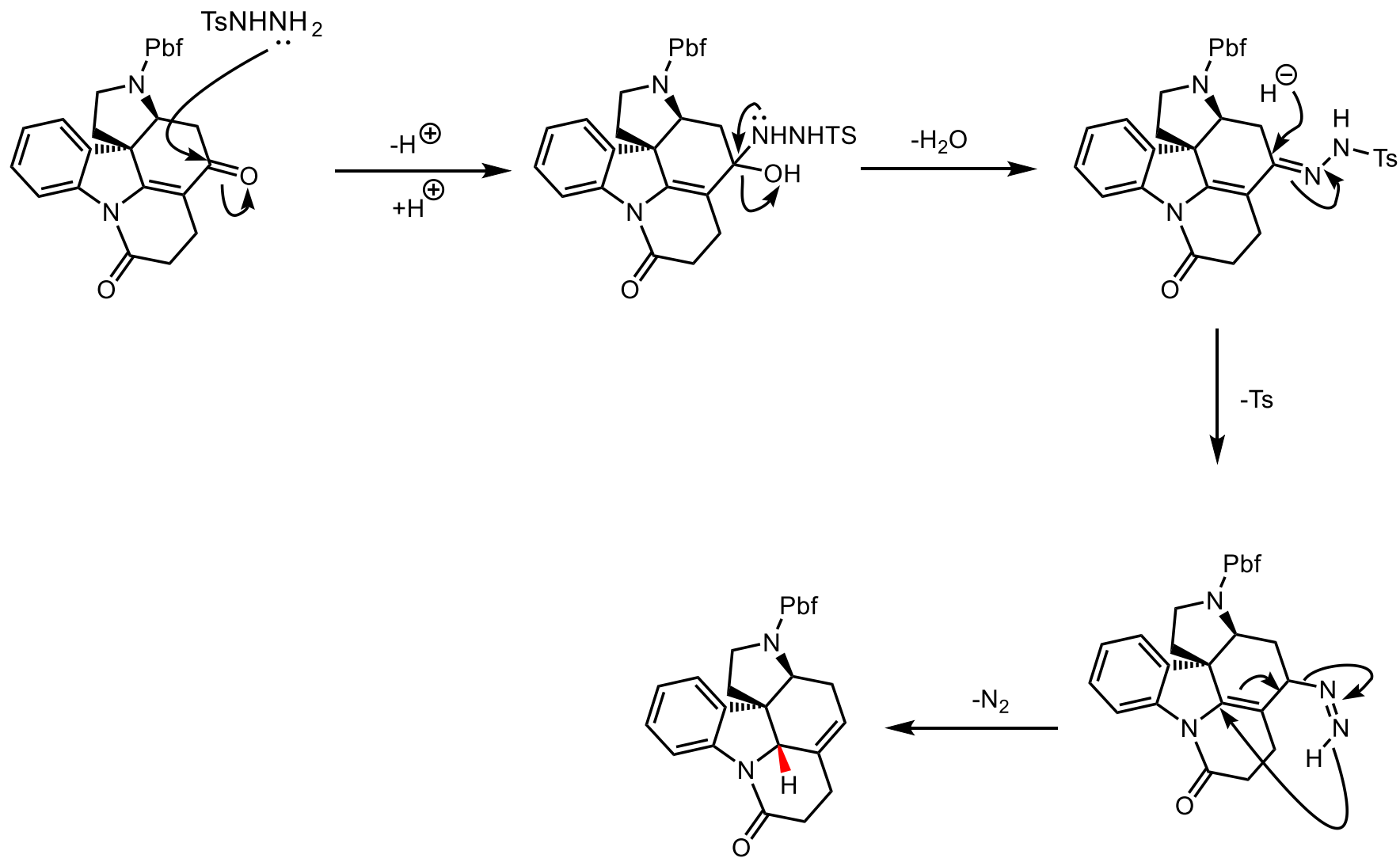


J. Am. Chem. Soc. **2020**, *142*, 4592.

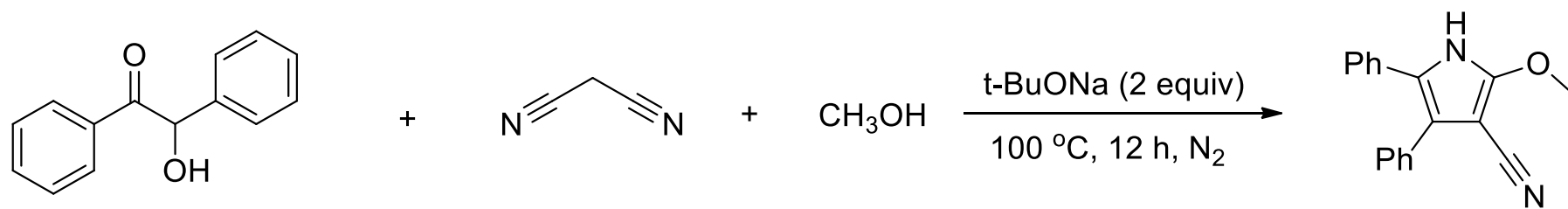




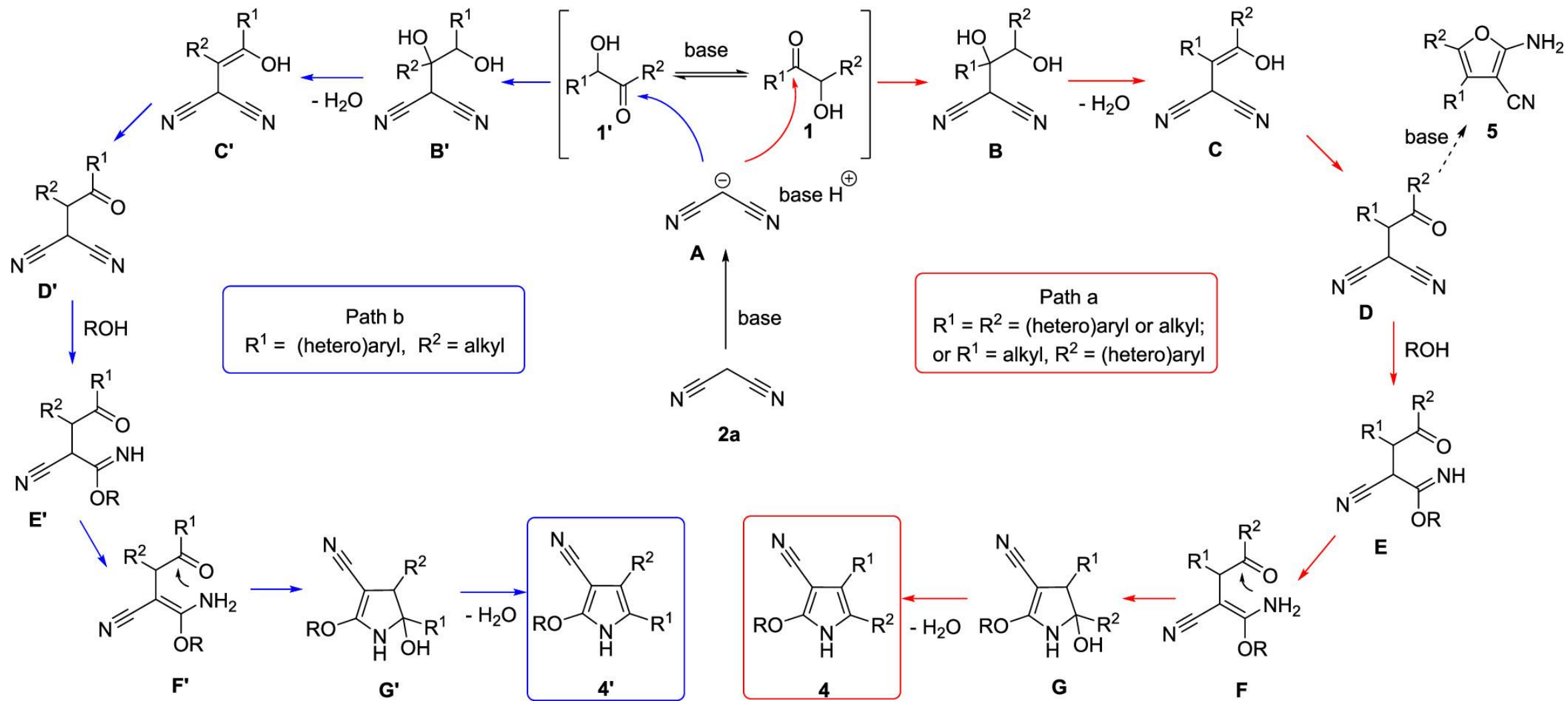
DOI: [10.1021/acs.orglett.1c01828](https://doi.org/10.1021/acs.orglett.1c01828).

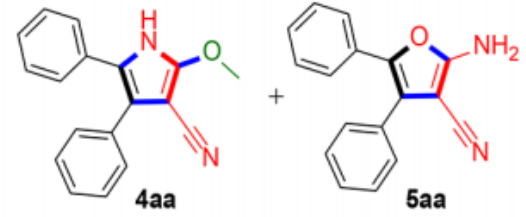
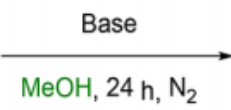
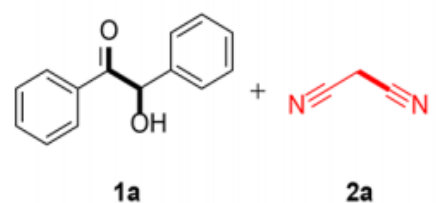


2.



J. Org. Chem. **2021**, 86, 9610.





entry	1a/2a	base	temp (°C)	time (h)	yield (%) ^b	
					4aa	5aa
1	1:2	NaOH	80	24	21	10
2	1:2		80	24	nd ^c	nd
3	1:2	NaOH	110	24	30	trace
4	1:2	KOH	110	24	8	26
5	1:2	CsOH	110	24	7	45
6	1:2	K ₂ CO ₃	110	24	21	51
7	1:2	NaNH ₂	110	24	8	55
8	1:2	CsF	110	24	trace	68
9	1:2	CH ₃ ONa	110	24	trace	47
10	1:2	<i>t</i> -BuOLi	110	24	33	trace
11	1:2	<i>t</i> -BuONa	110	24	39	trace
12	1:2	<i>t</i> -BuOK	110	24	27	7
13	1:1	<i>t</i> -BuONa	110	24	57	trace
14 ^d	2:1	<i>t</i> -BuONa	110	24	96	trace
15 ^d	2:1	<i>t</i> -BuONa	100	12	95 (92)	trace