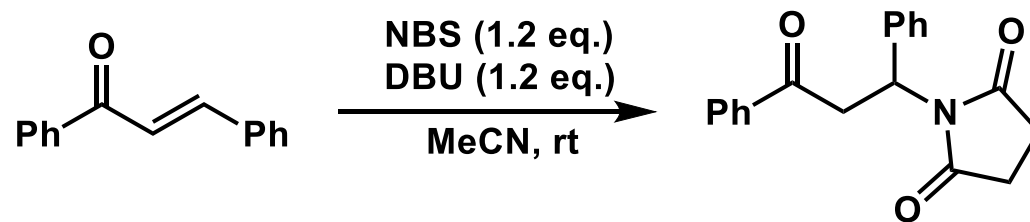
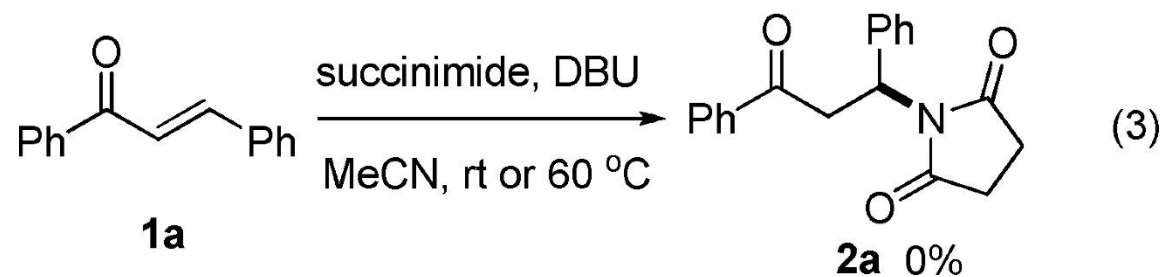
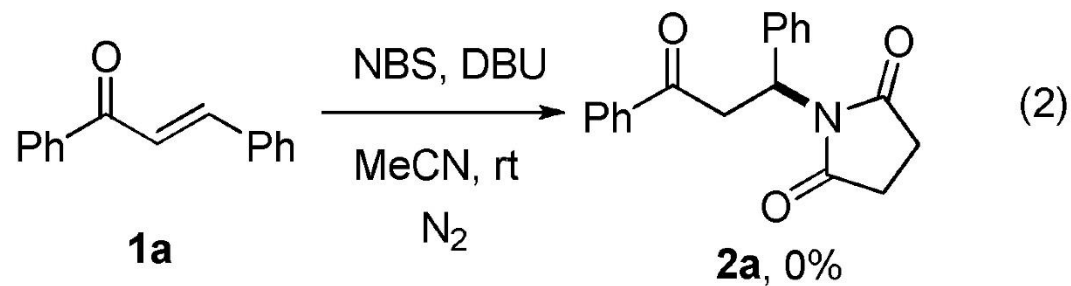
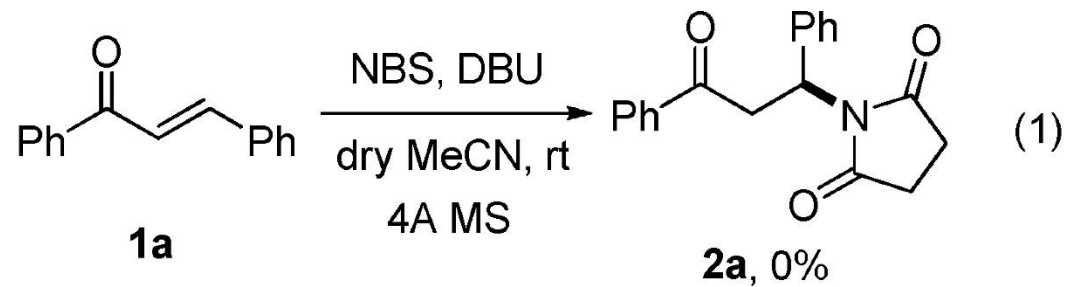
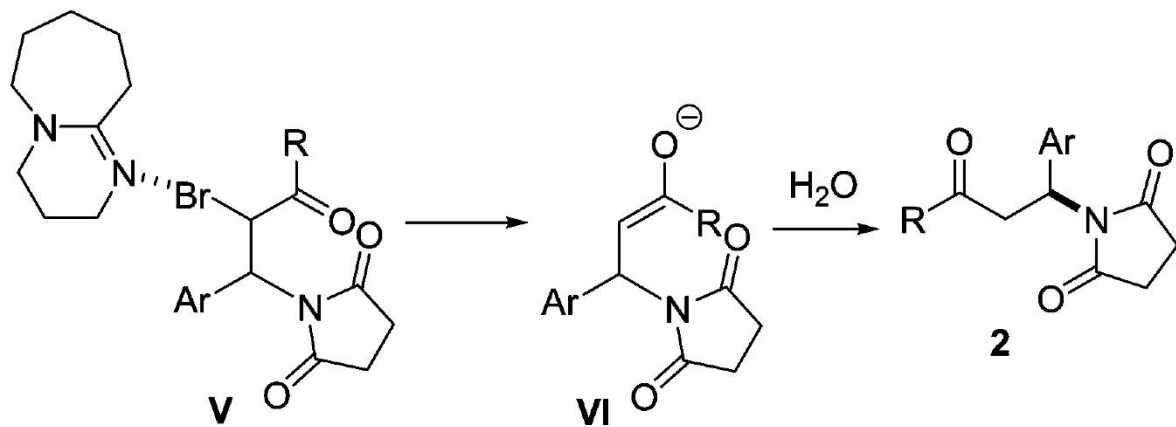
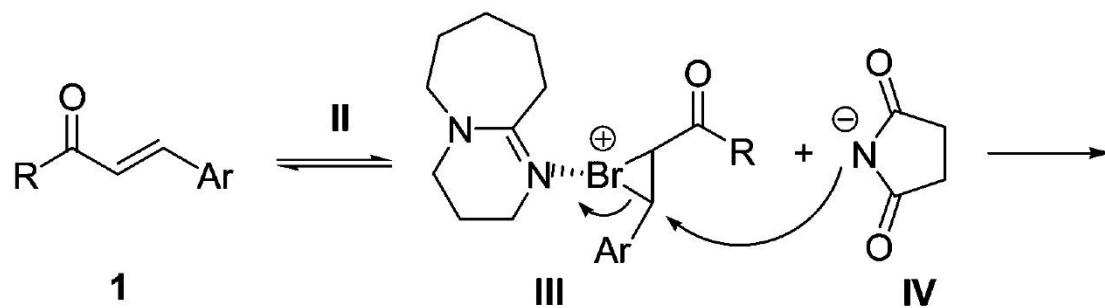
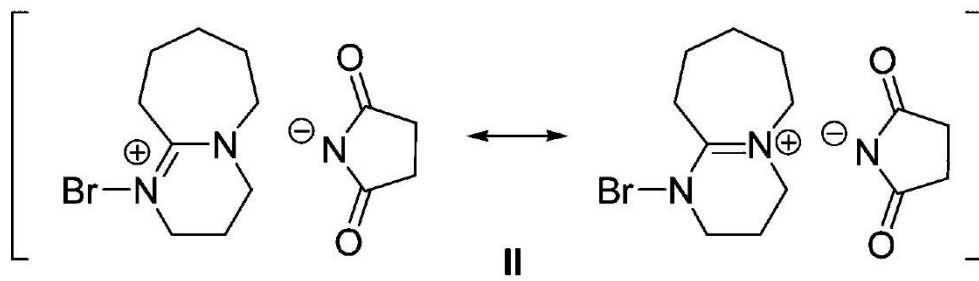
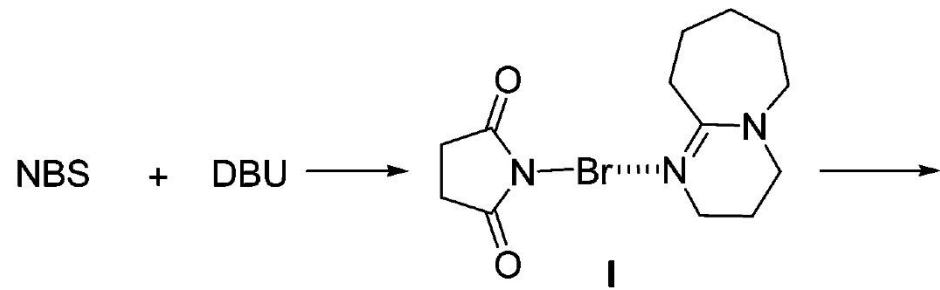


1.

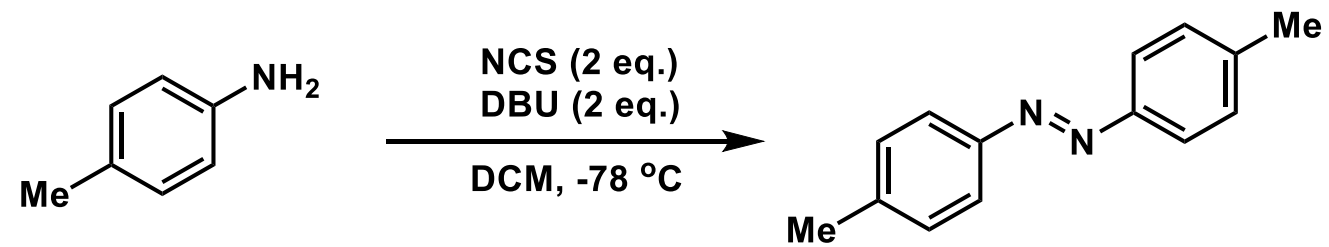


Org. Lett. **2013**, *15*, 852.

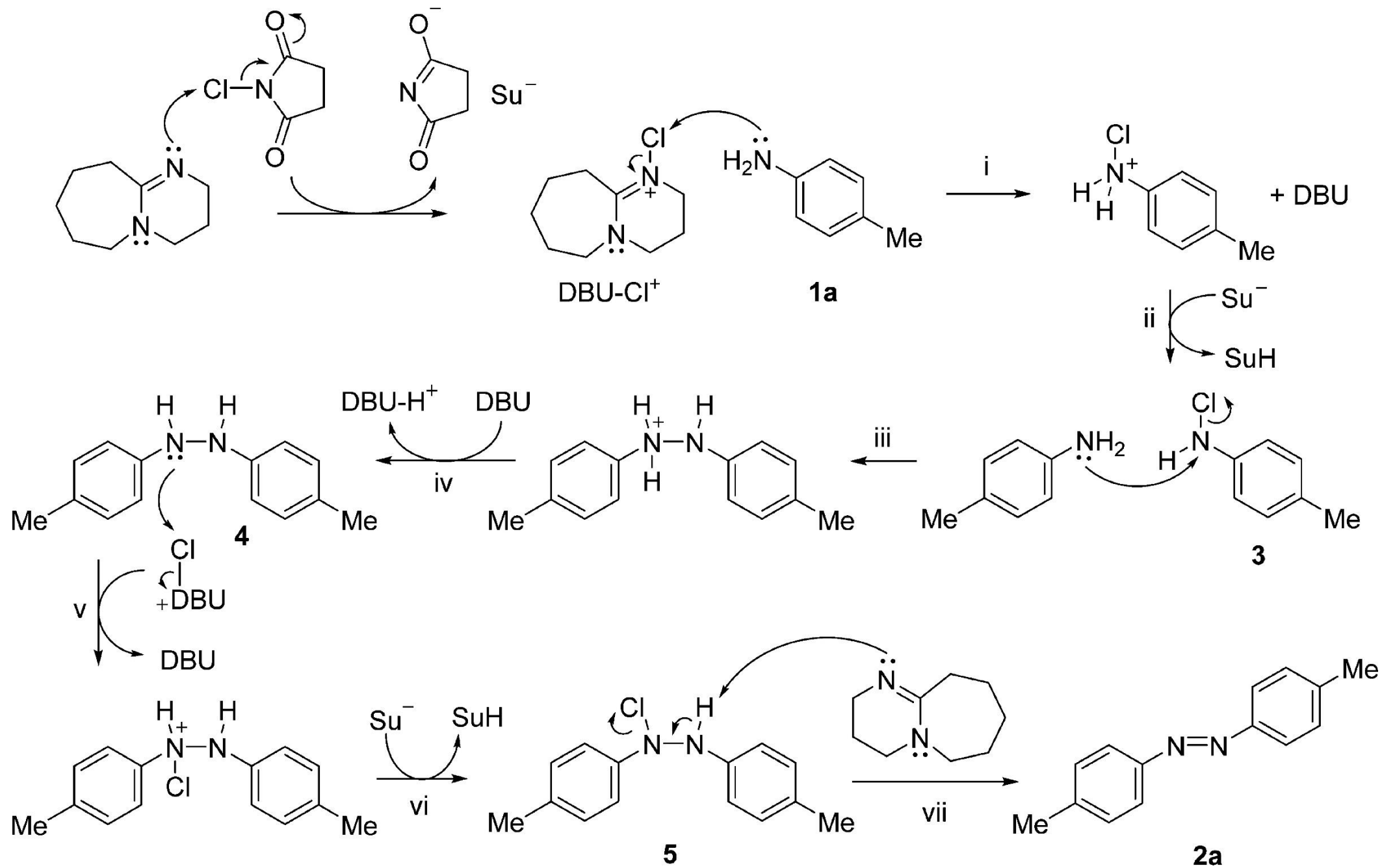




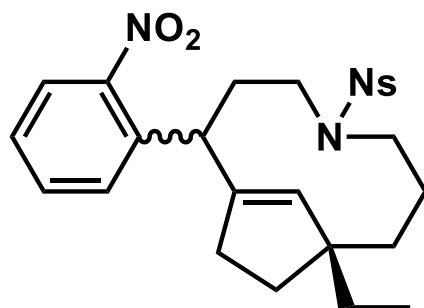
2.



J. Org. Chem. **2017**, *82*, 9873.

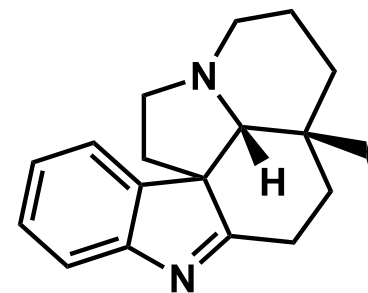


3.

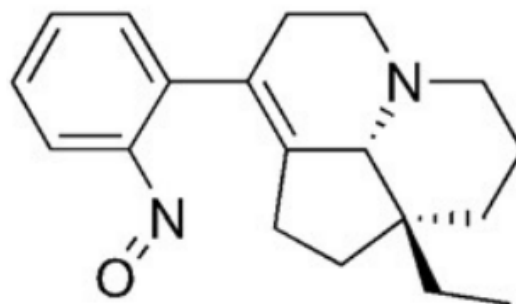


1. *m*-CPBA, NaHCO₃, DCM
then PhSH, Cs₂CO₃, 74%

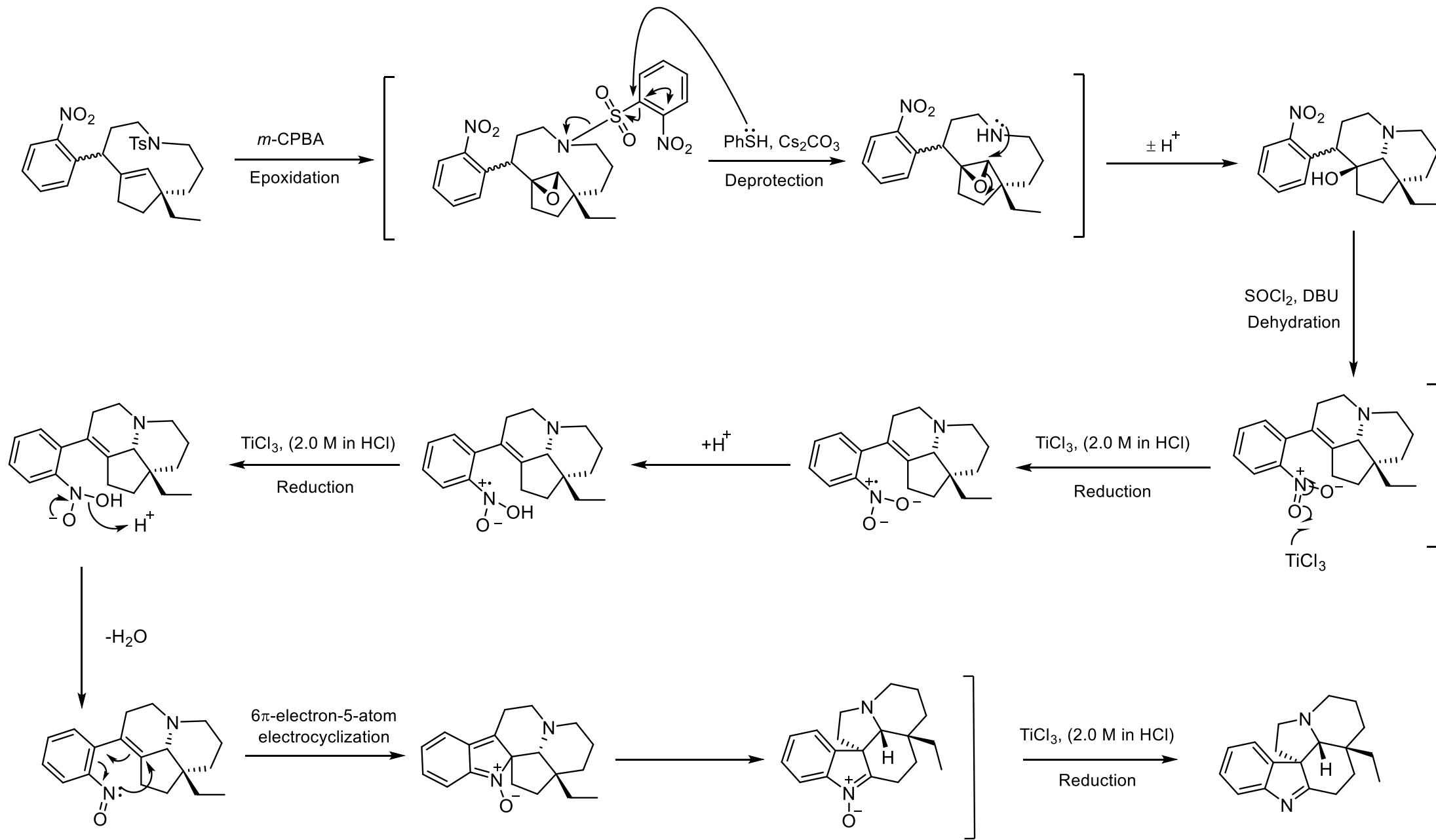
2. SOCl₂, DBU, DCM then
TiCl₃ (2.0 M in HCl), NH₄OAc
CH₃CN, 78%



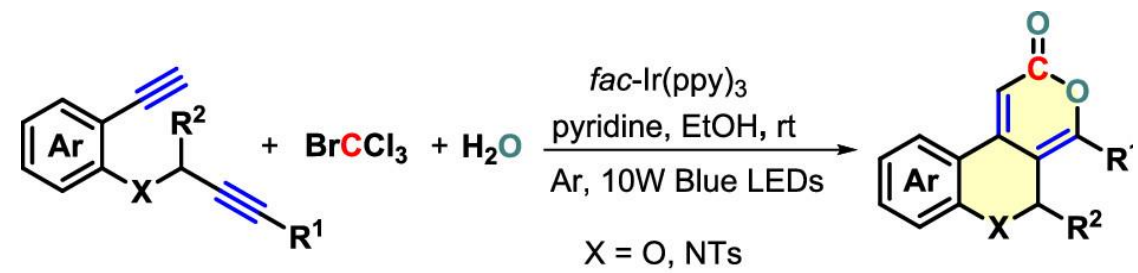
Angew. Chem. Int. Ed. **2020**, *59*, 13990.



34



4.



Org. Lett., **2021**, *23*, 7845.

