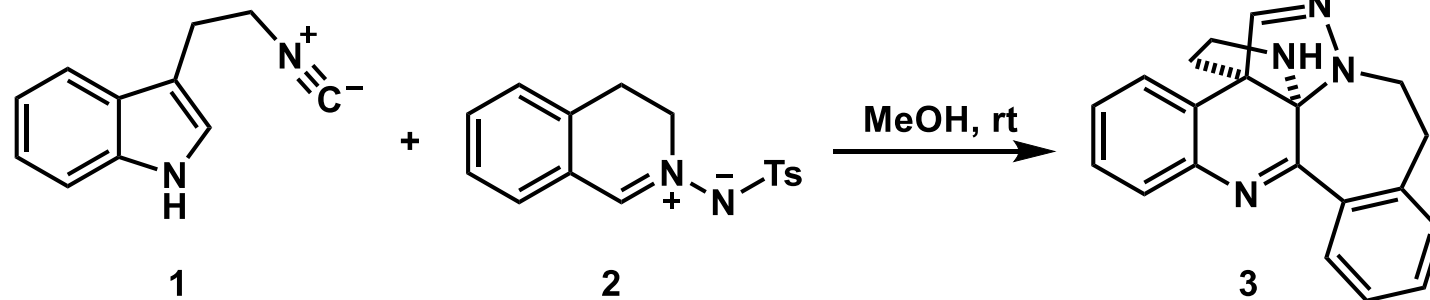
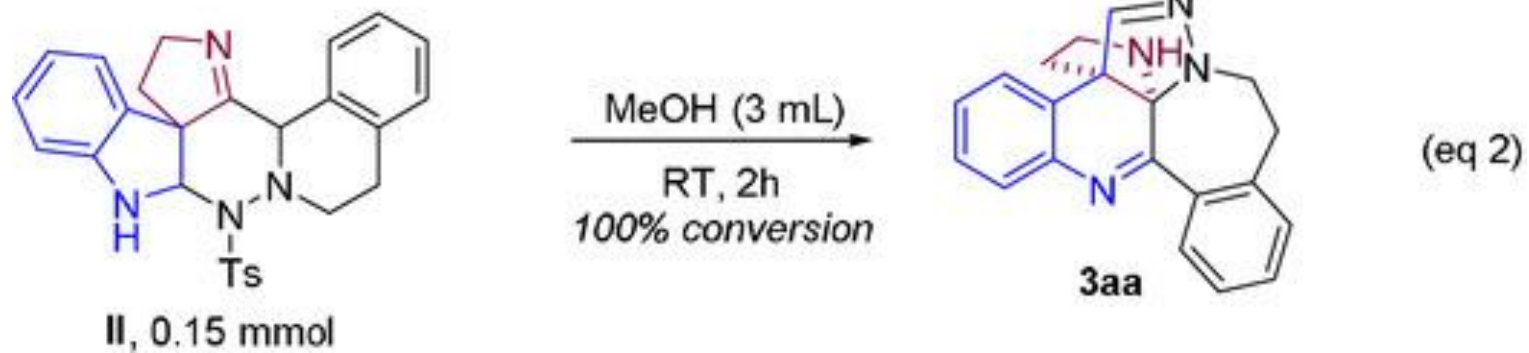
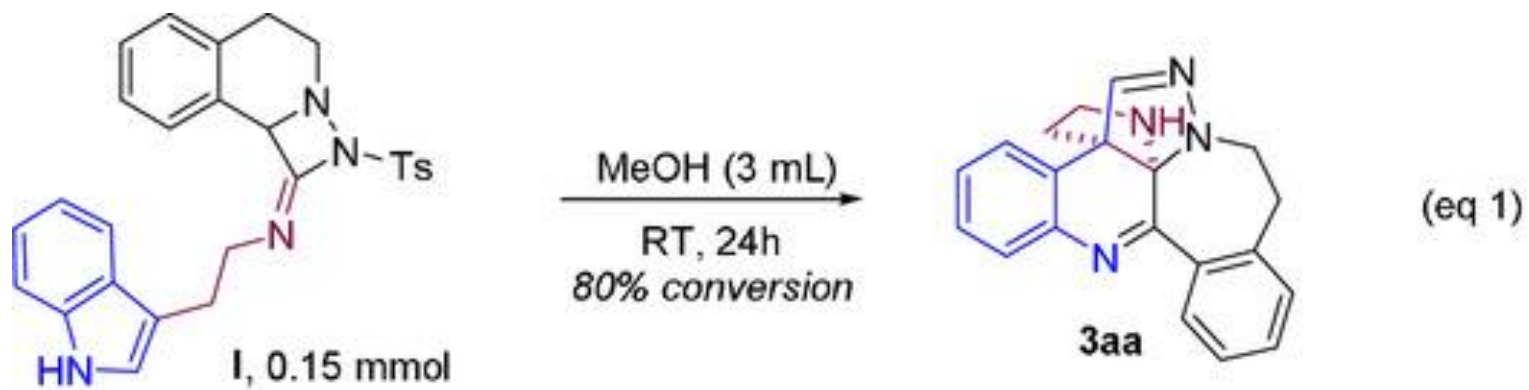
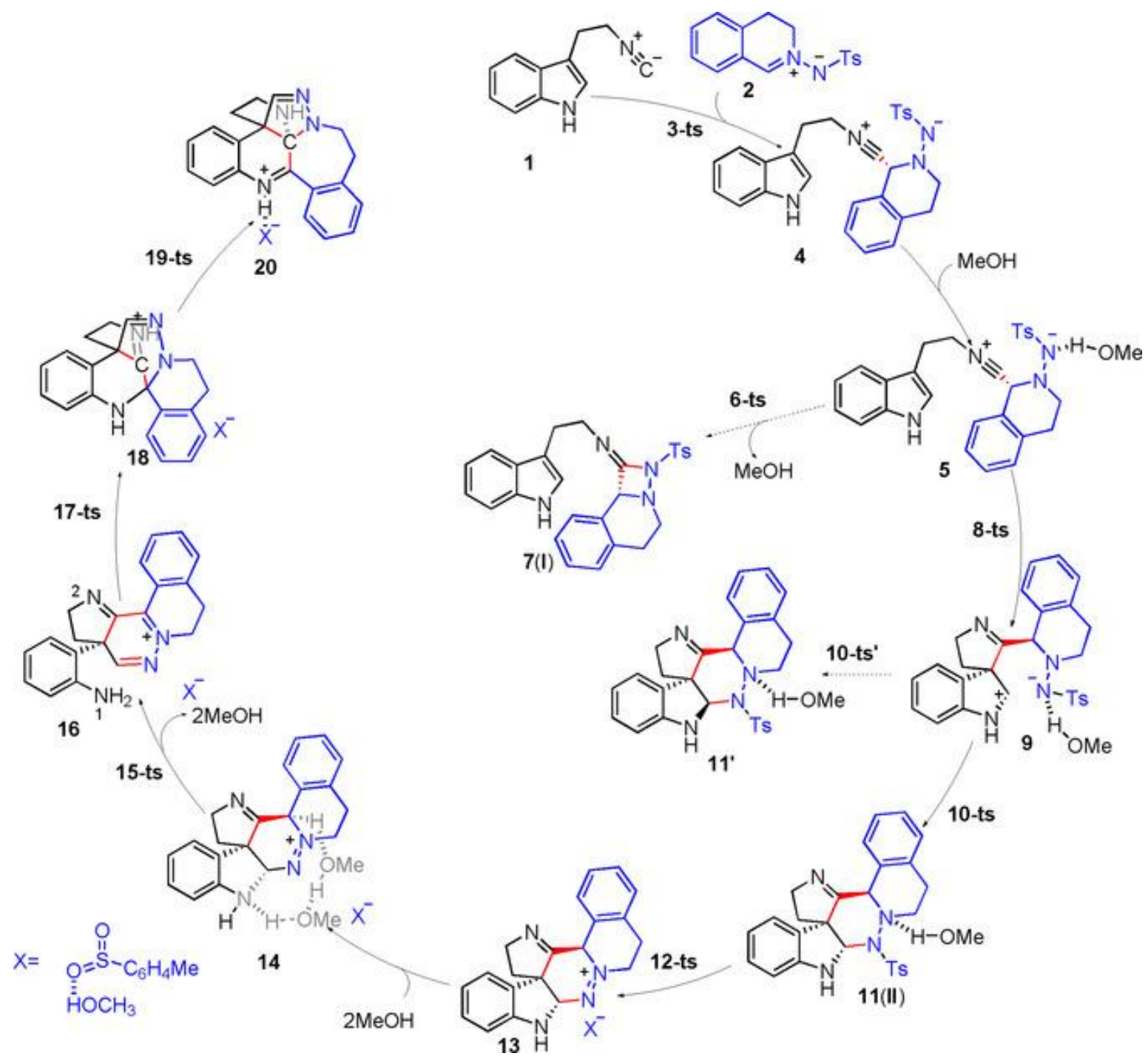


1.

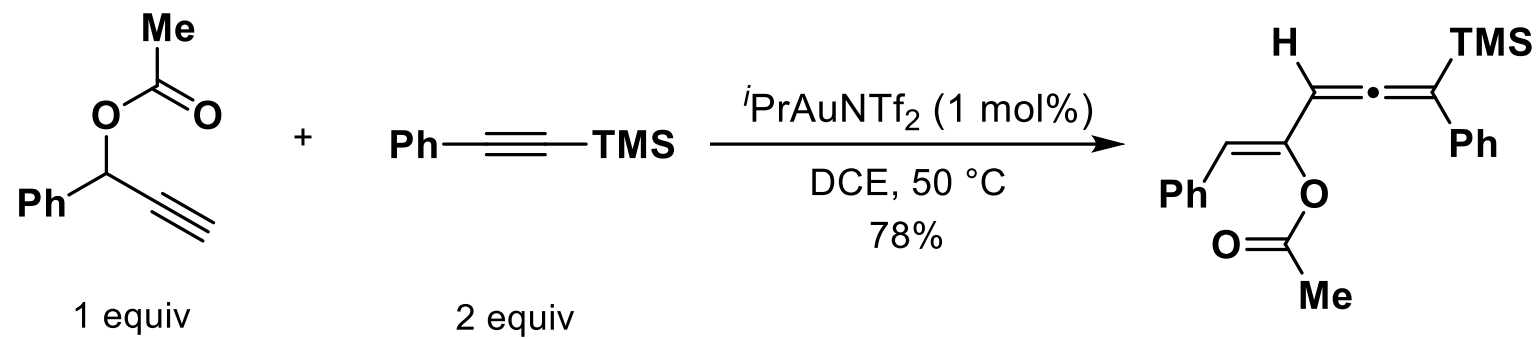


Angew. Chem. Int. Ed., **2020**, *59*, 21425.

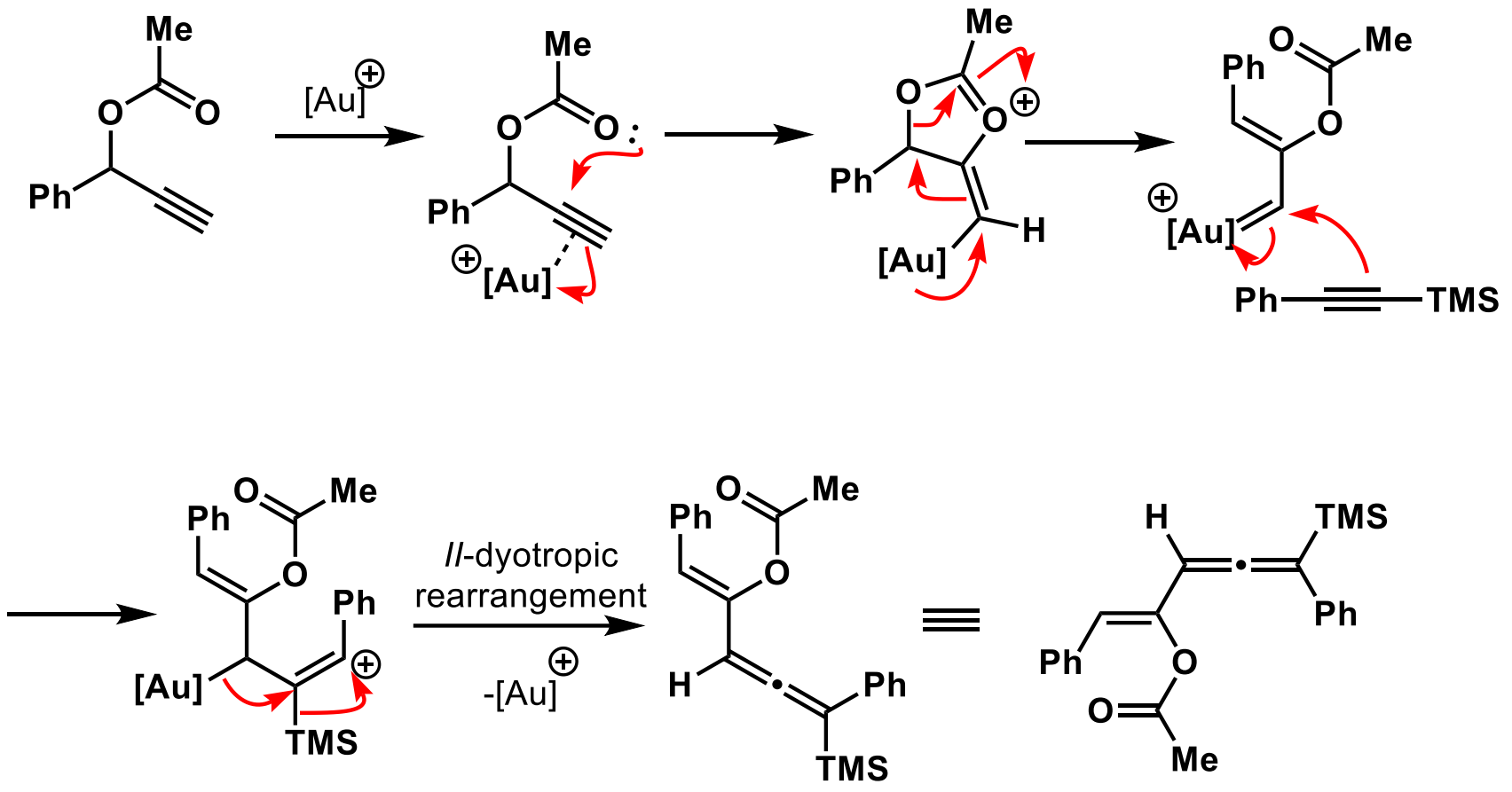


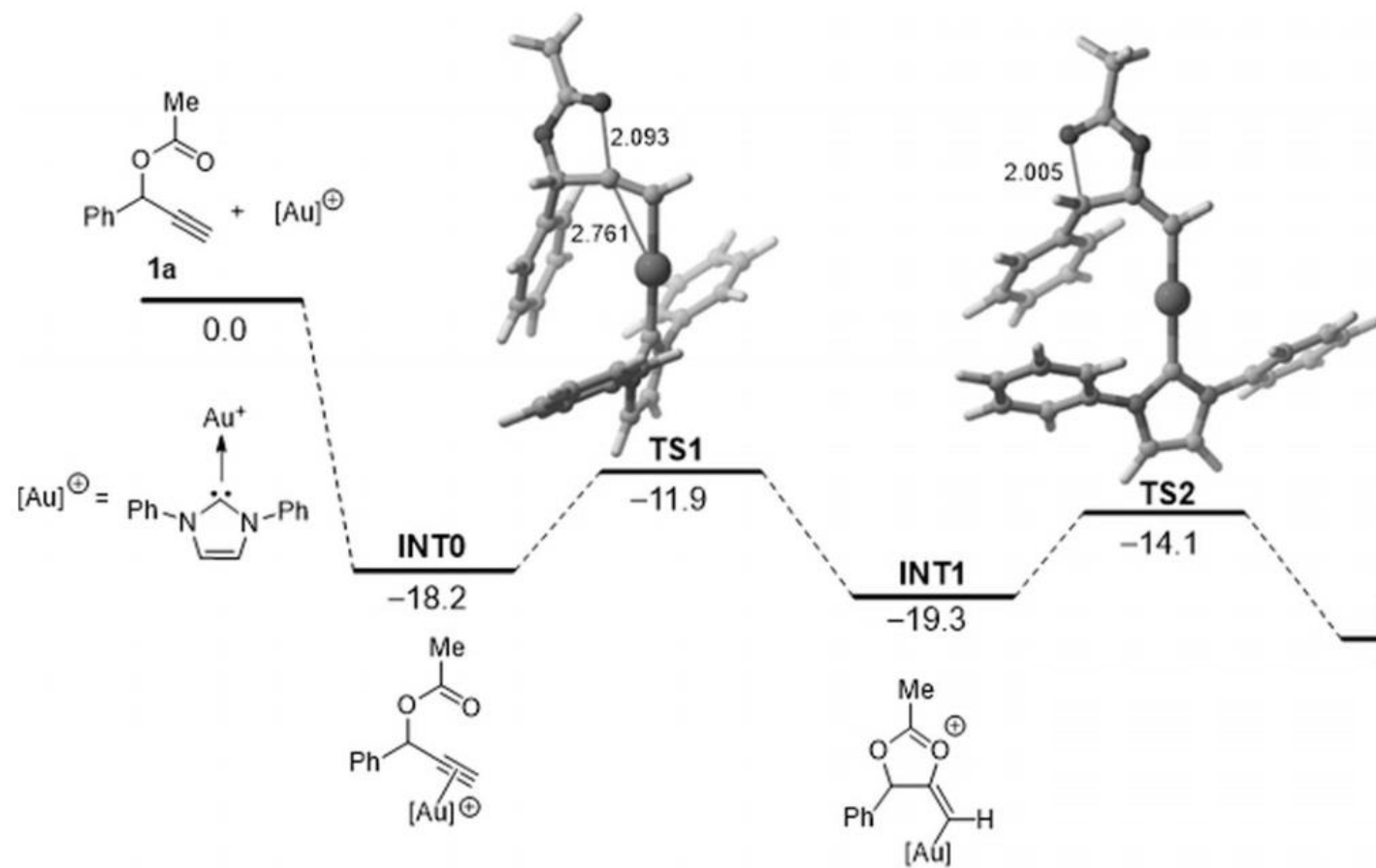


2.

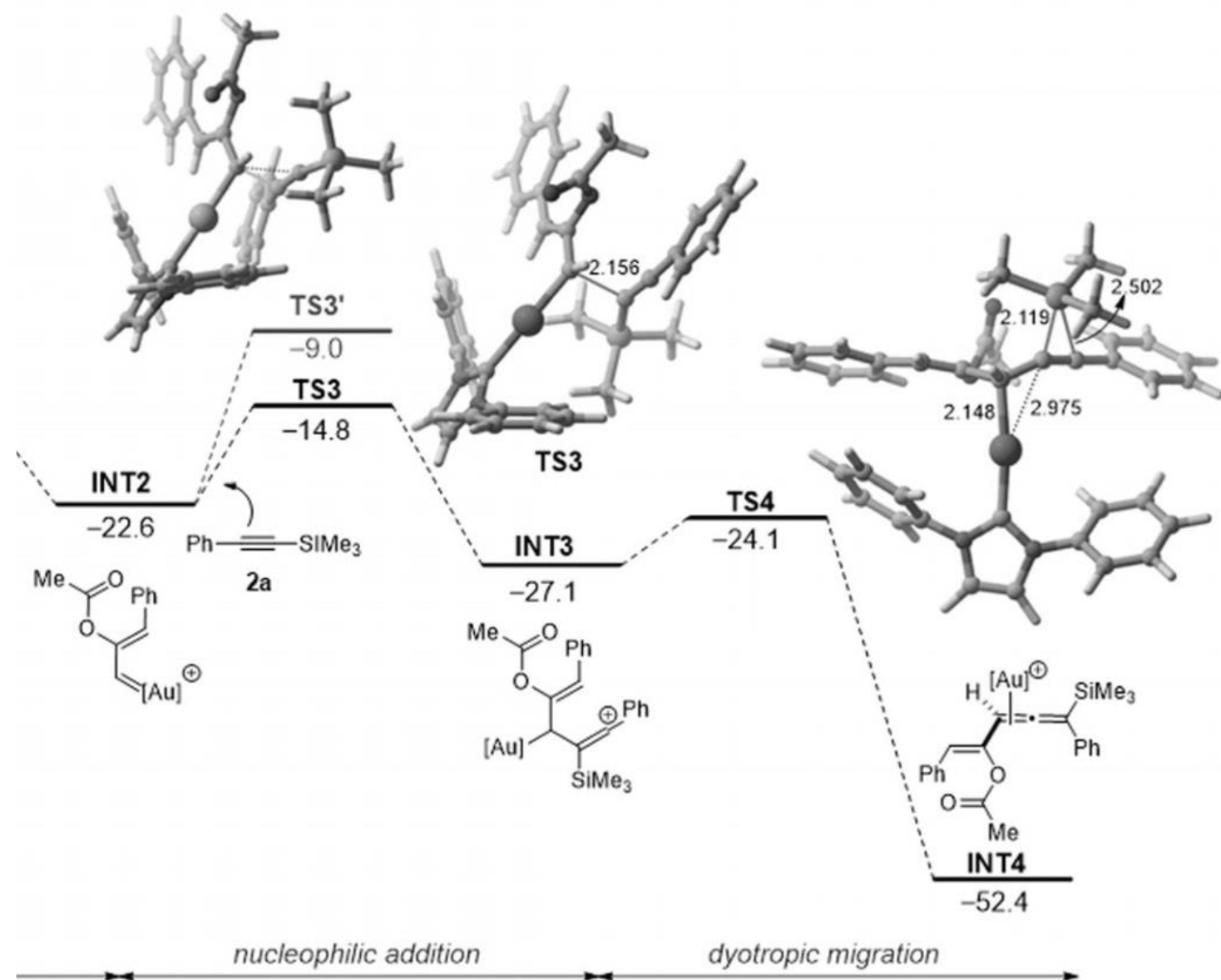


Angew. Chem. Int. Ed., **2021**, *60*, 25258.



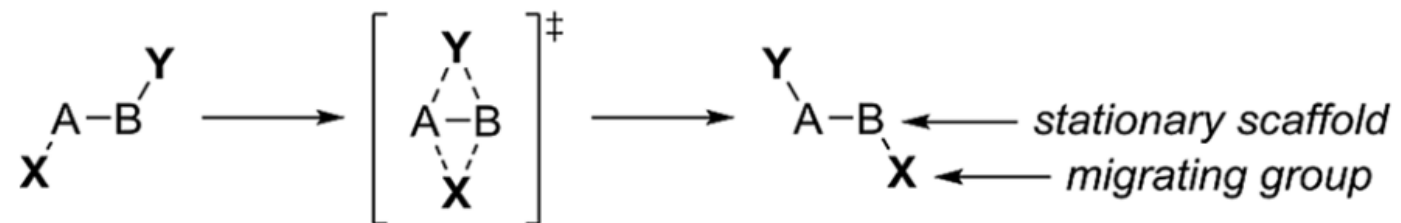


1,2-acyloxy migration



Classical Type I and Type II dyotropic rearrangements.

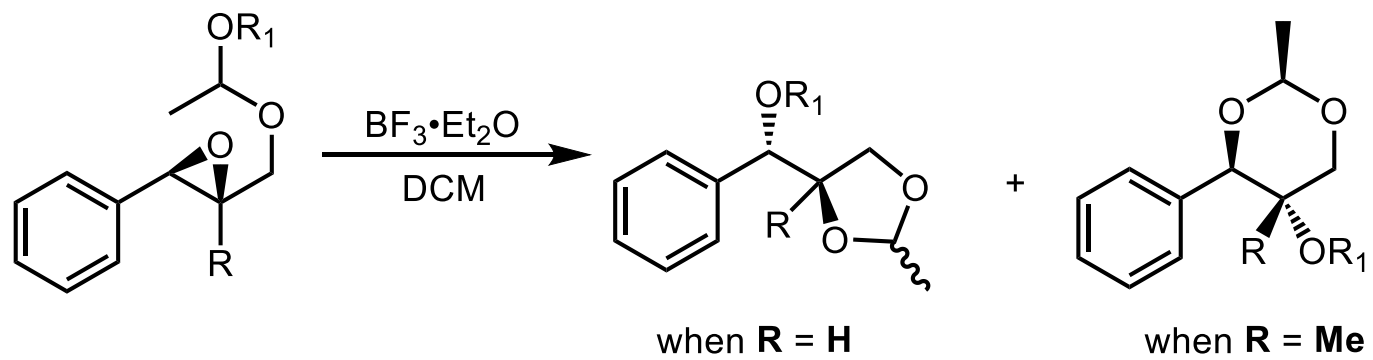
Type I:



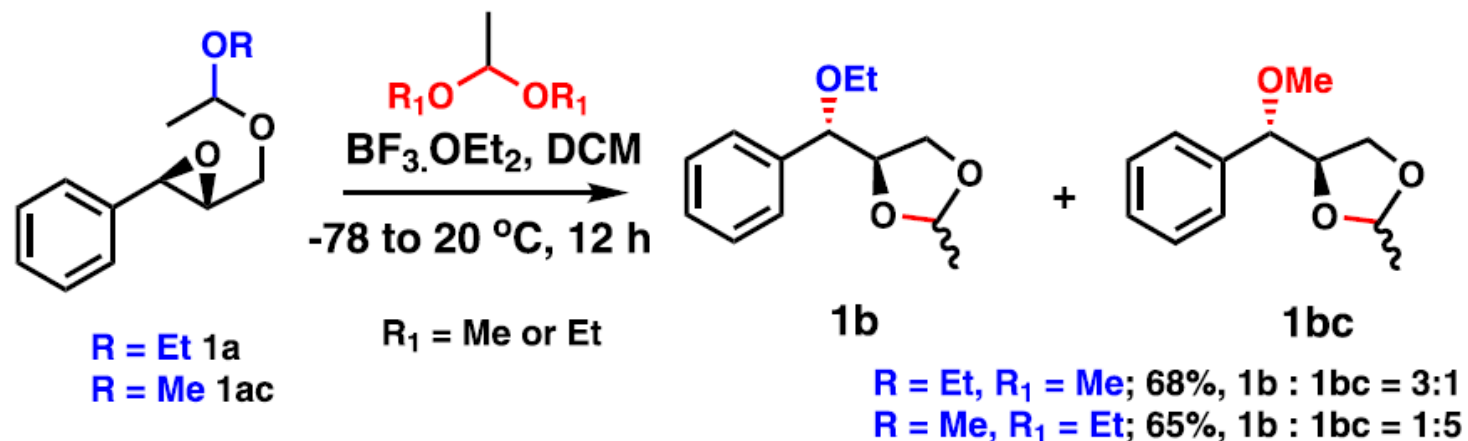
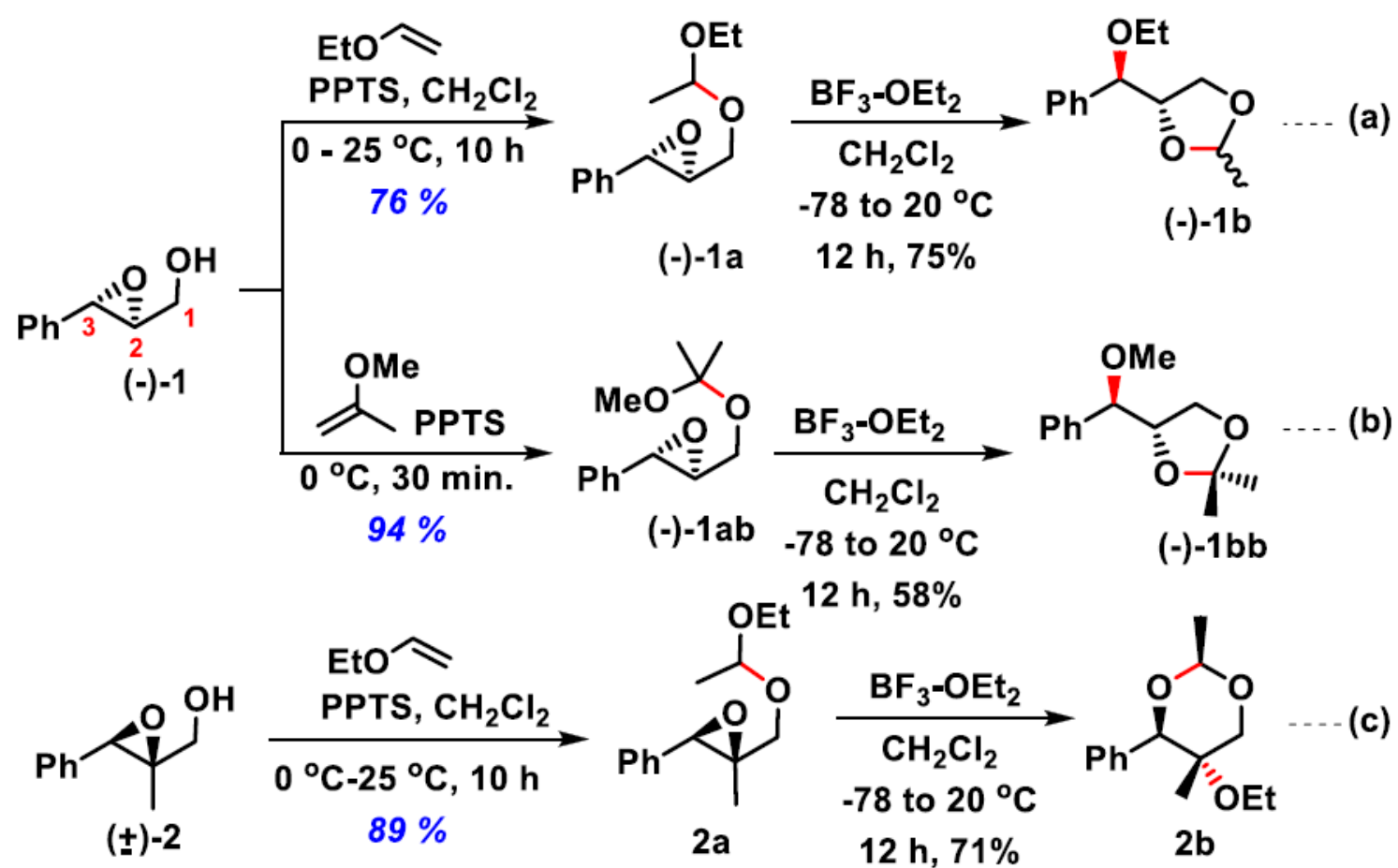
Type II:

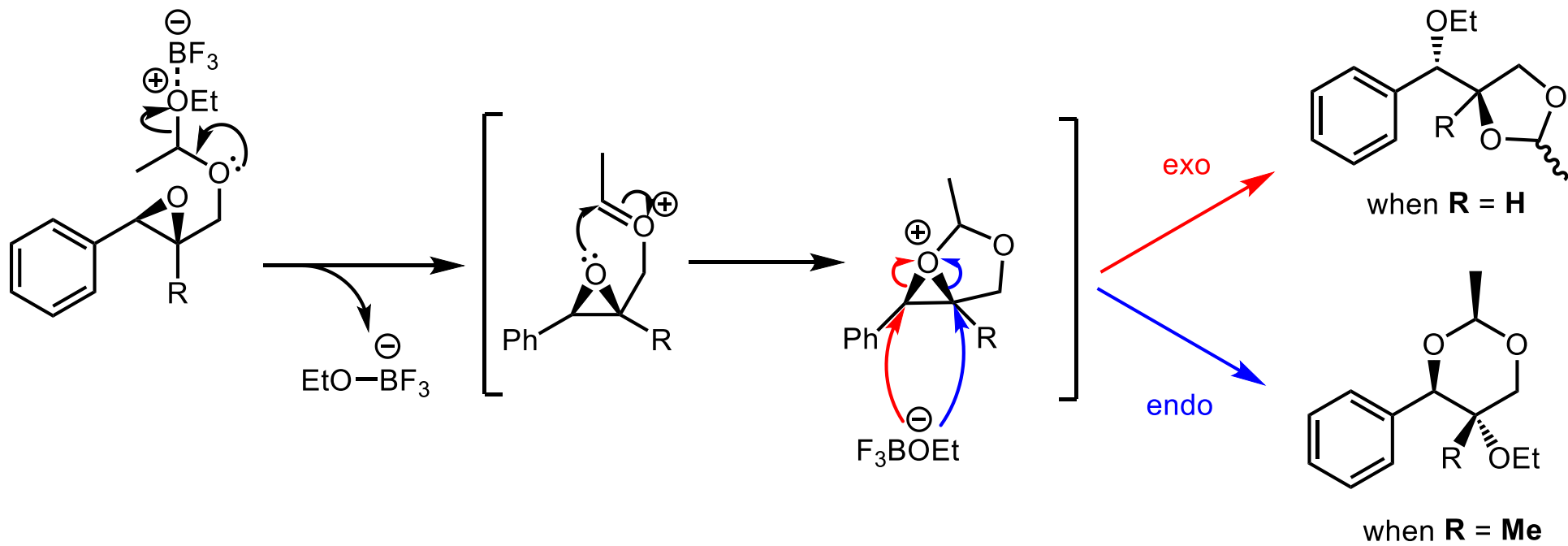
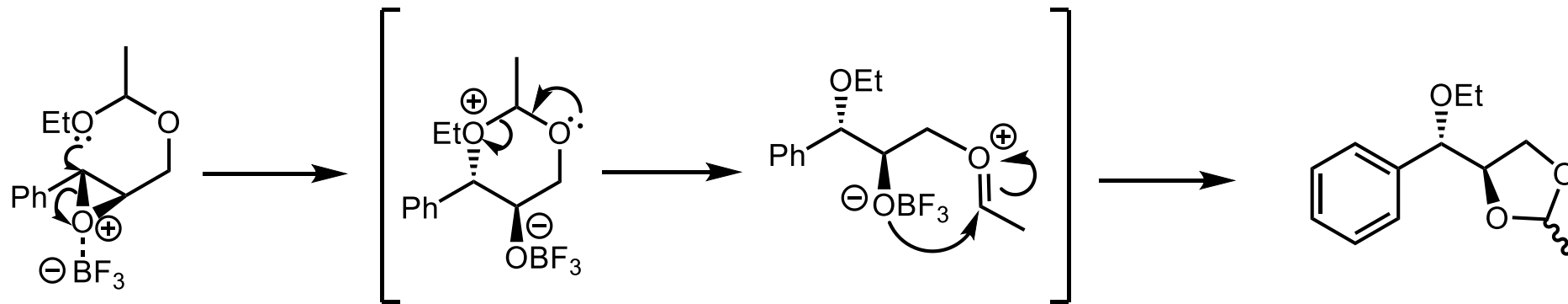


3.

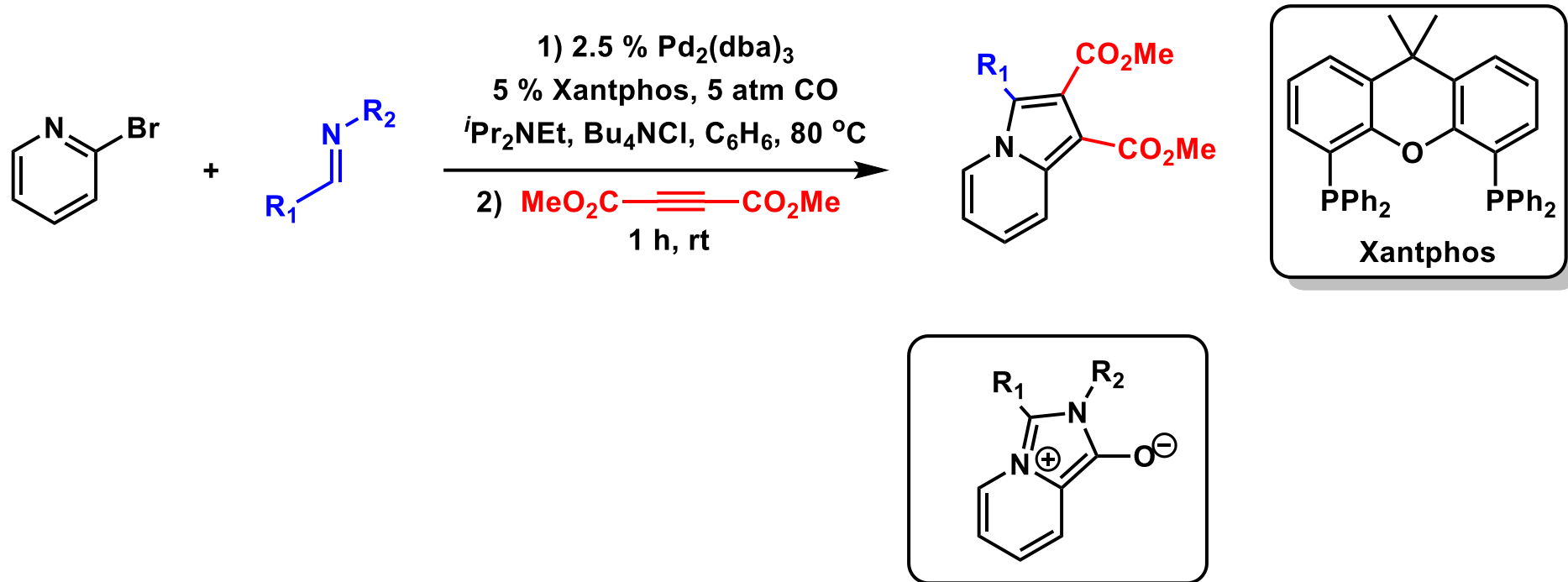


Org. Lett., 2022, 24, 6165.





4.



Chem. Sci., **2021**, *12*, 2251.

