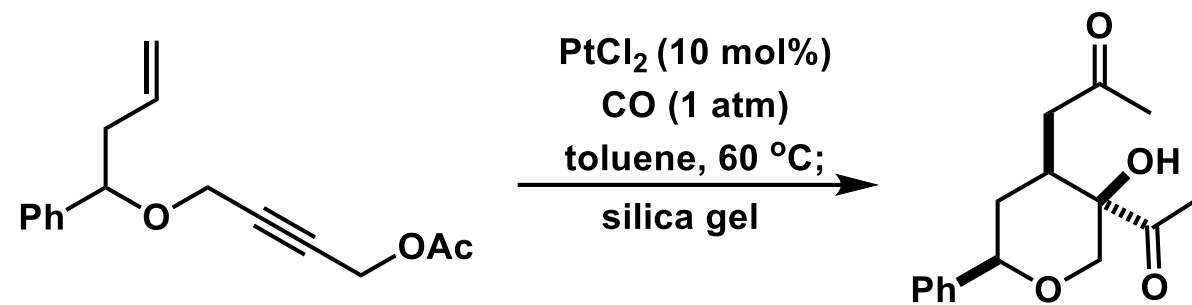
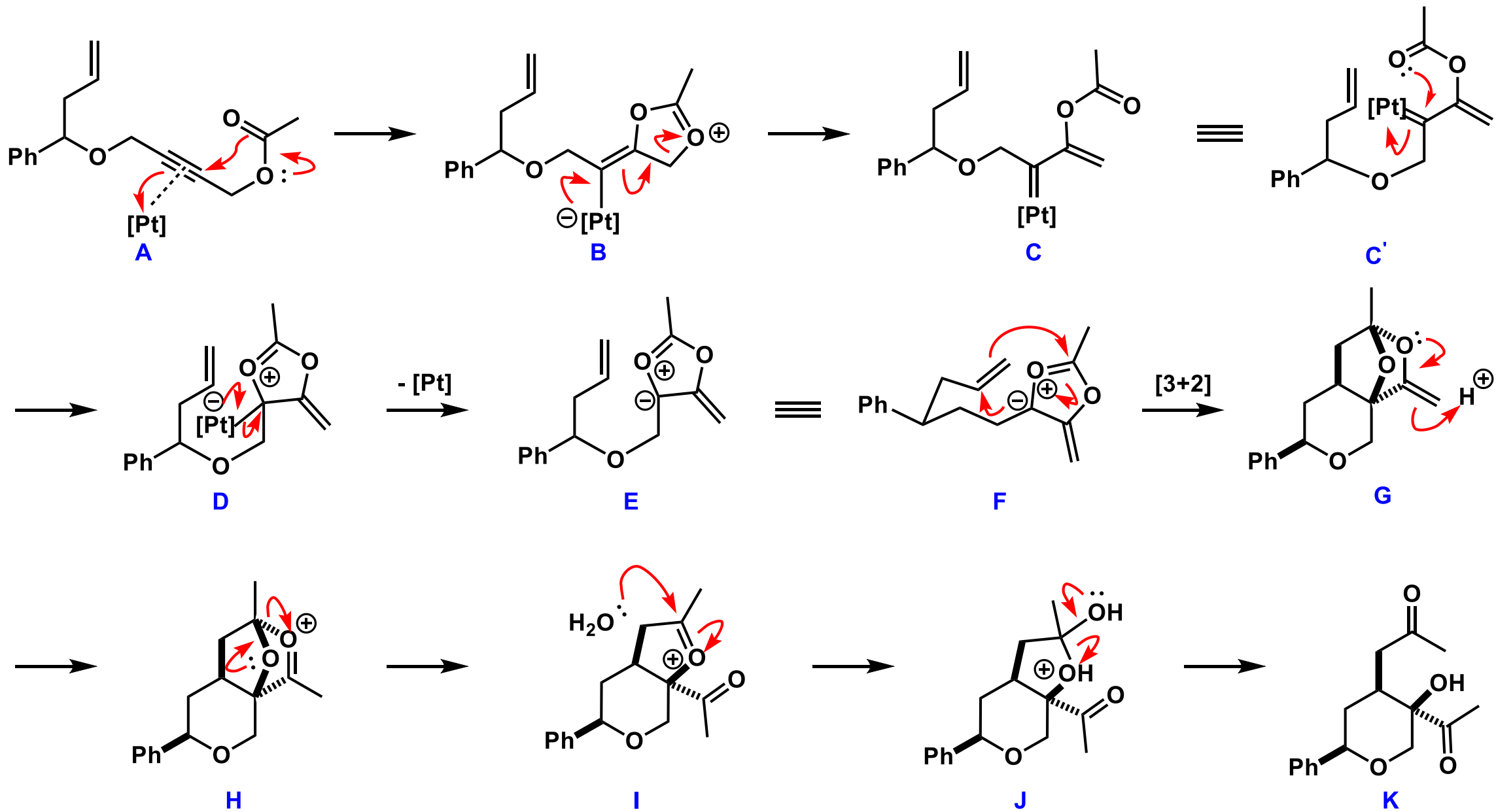


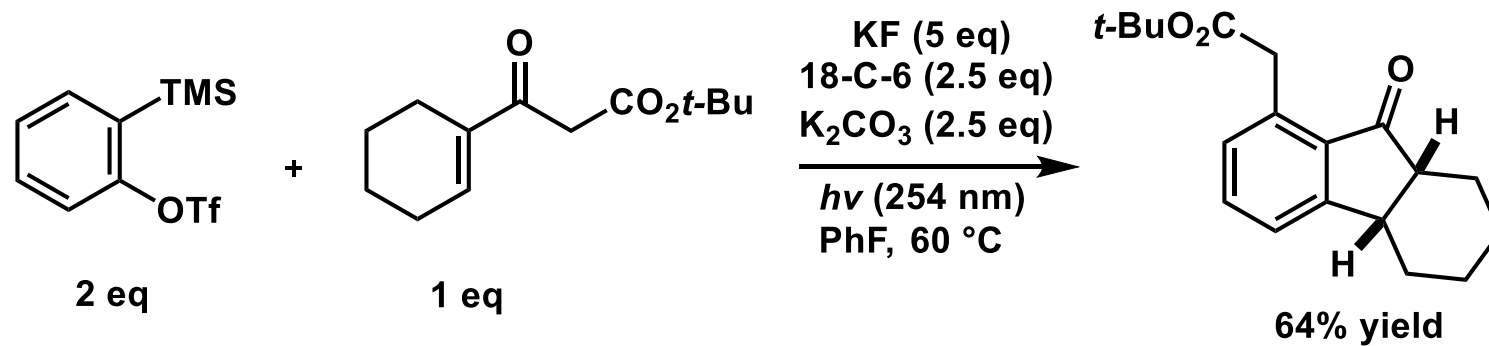
1.



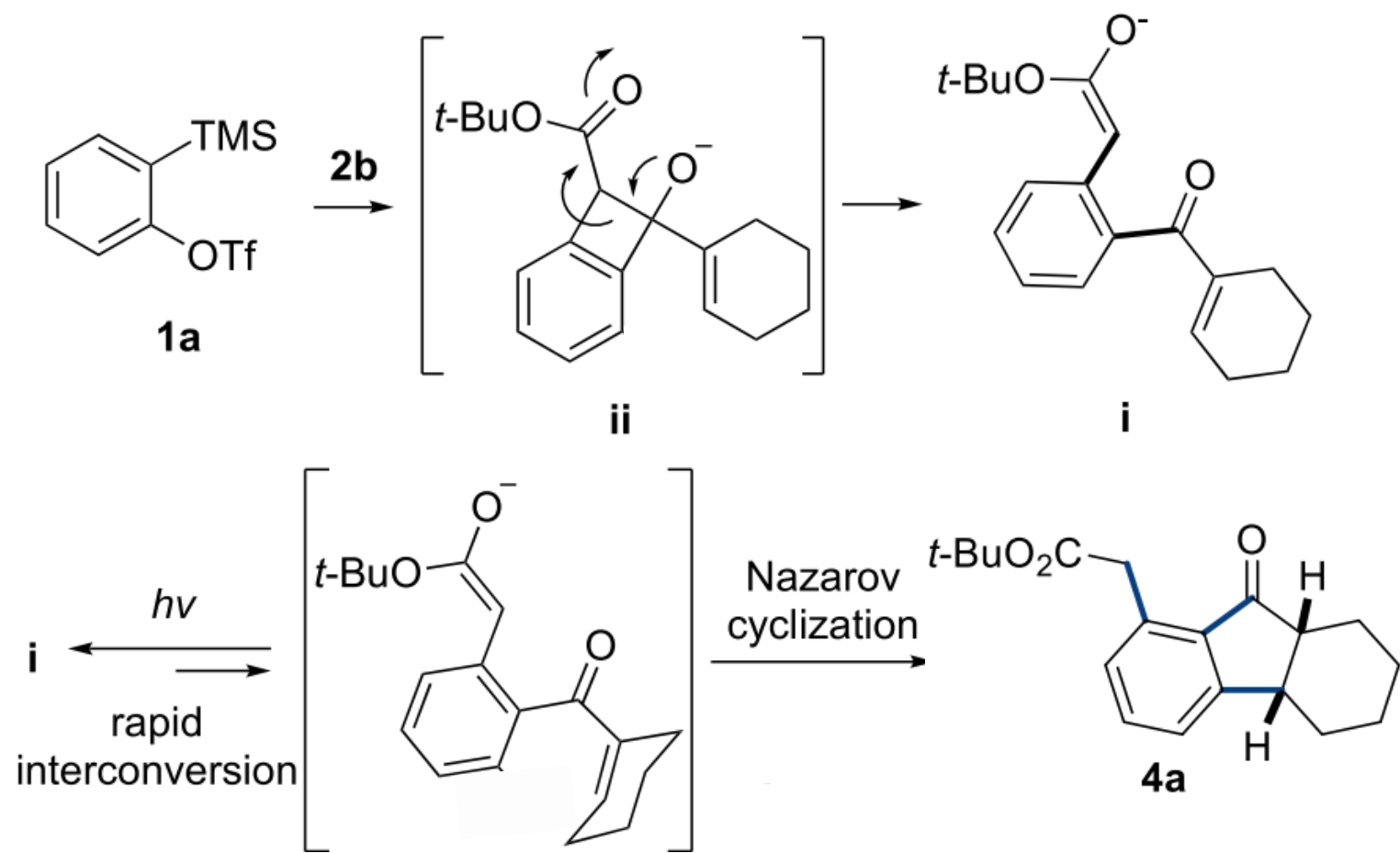
J. Am. Chem. Soc., **2010**, *132*, 1788.



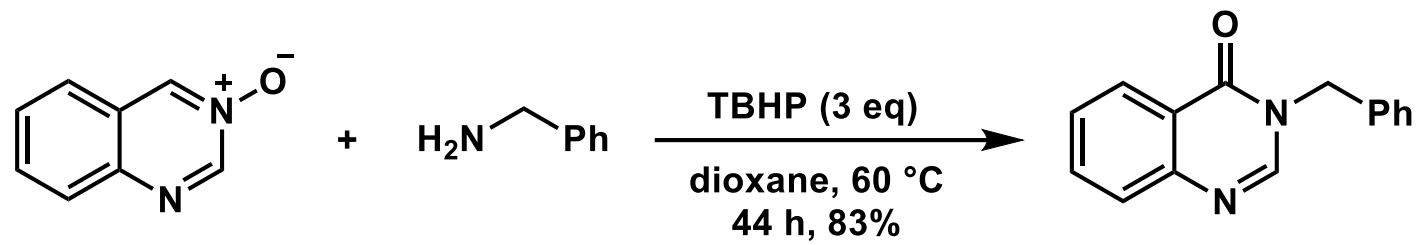
2.



Org. Lett., **2022**, 24, 7276.

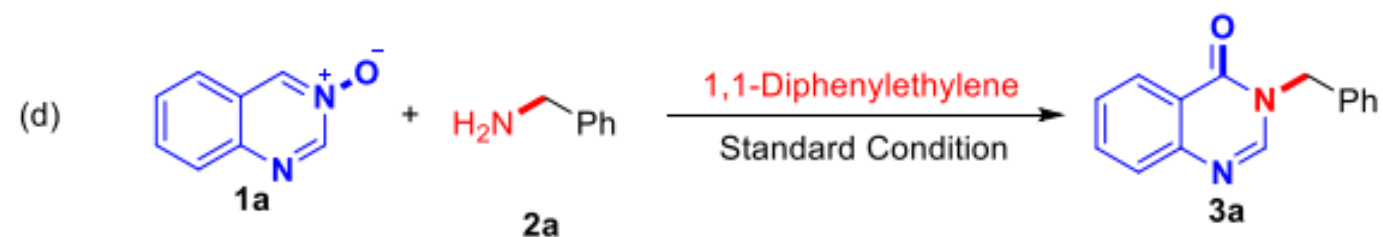
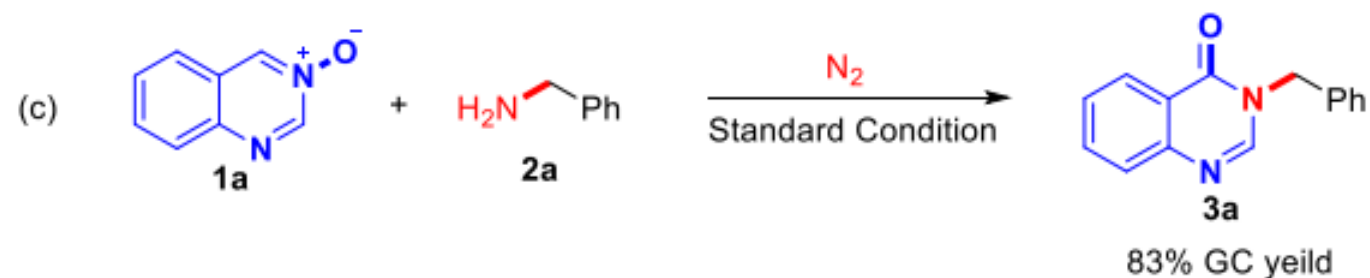
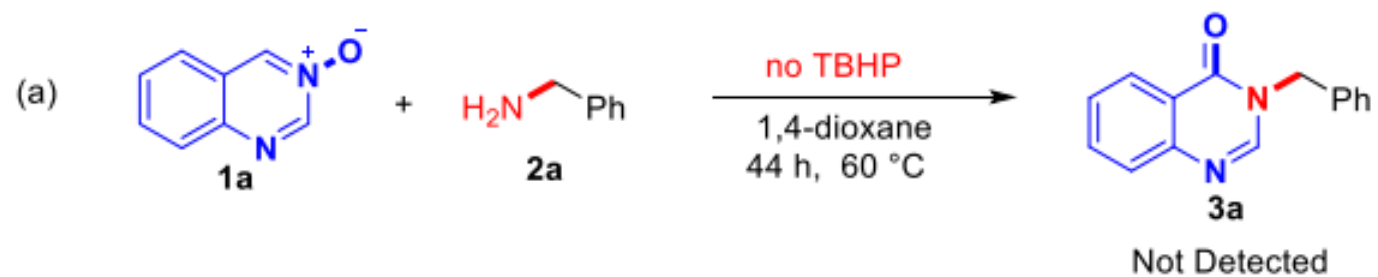


3.



J. Org. Chem., **2022**, *87*, 9864.

Scheme 4. Control Experiments



1 equiv of 1,1-diphenylethylene: 47% yield
2 equiv of 1,1-diphenylethylene: 15% yield
3 equiv of 1,1-diphenylethylene: trace

