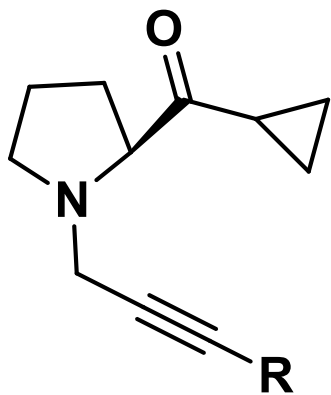
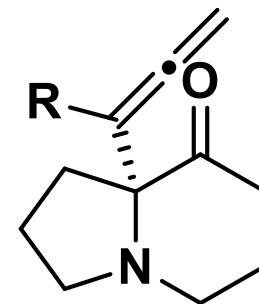


1.



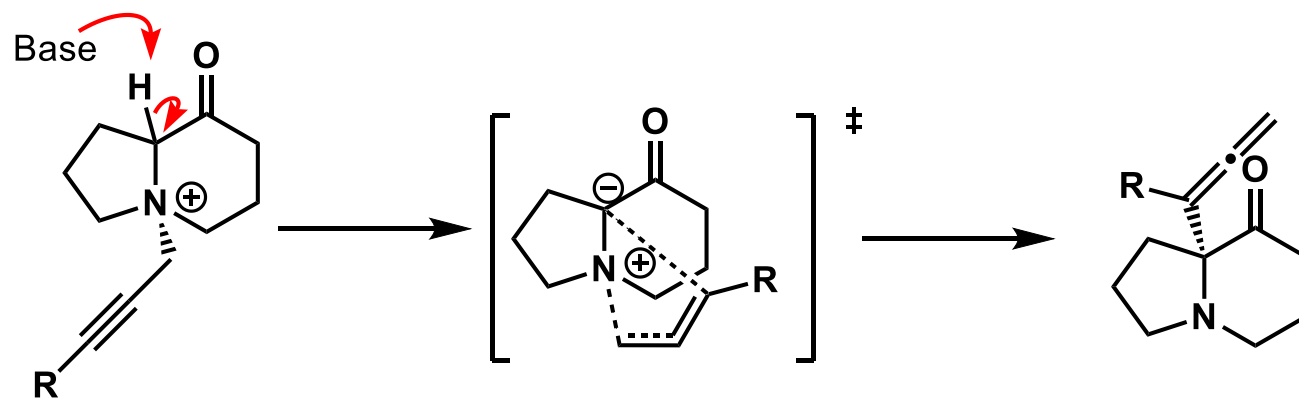
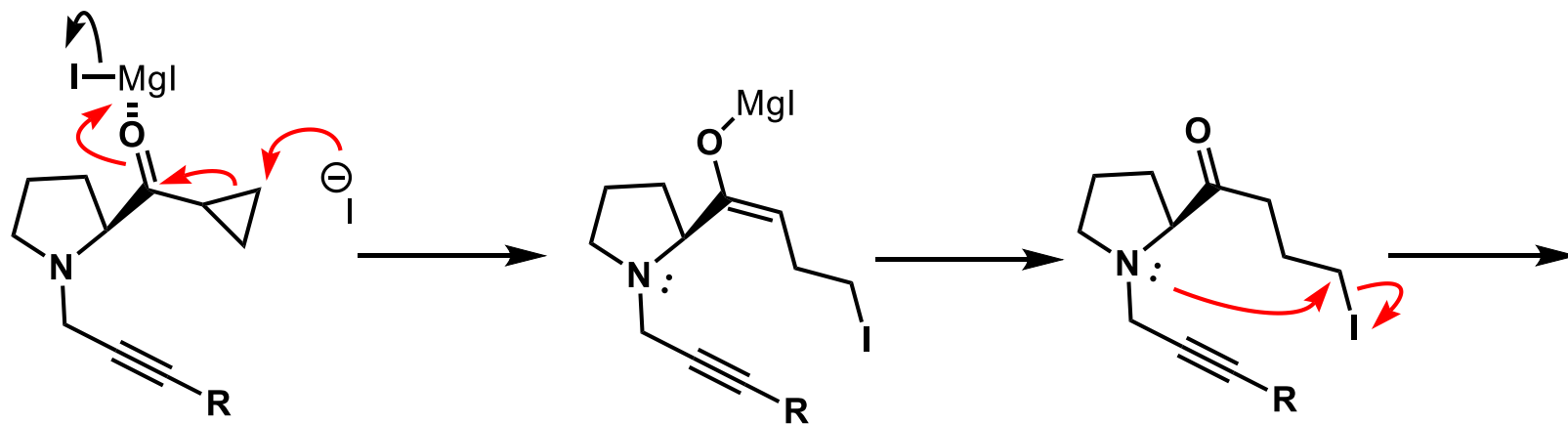
MgI₂ (2.0 equiv), DCM, rt

then Cs₂CO₃ (2.0 equiv), CH₃CN, rt



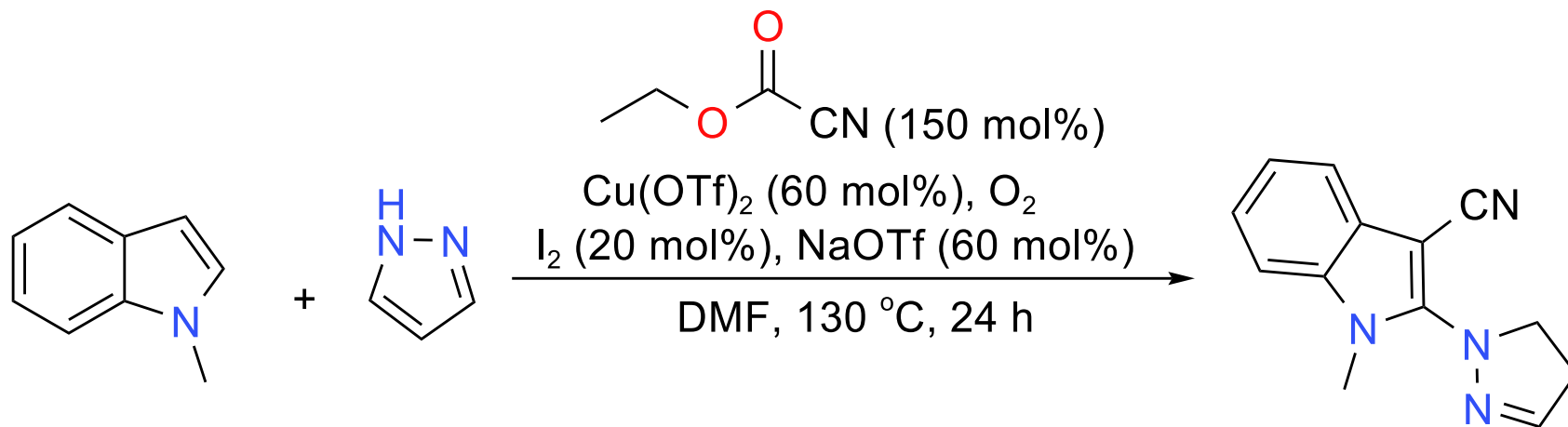
up to 90% yield

DOI: [10.1021/acs.orglett.2c02759](https://doi.org/10.1021/acs.orglett.2c02759).

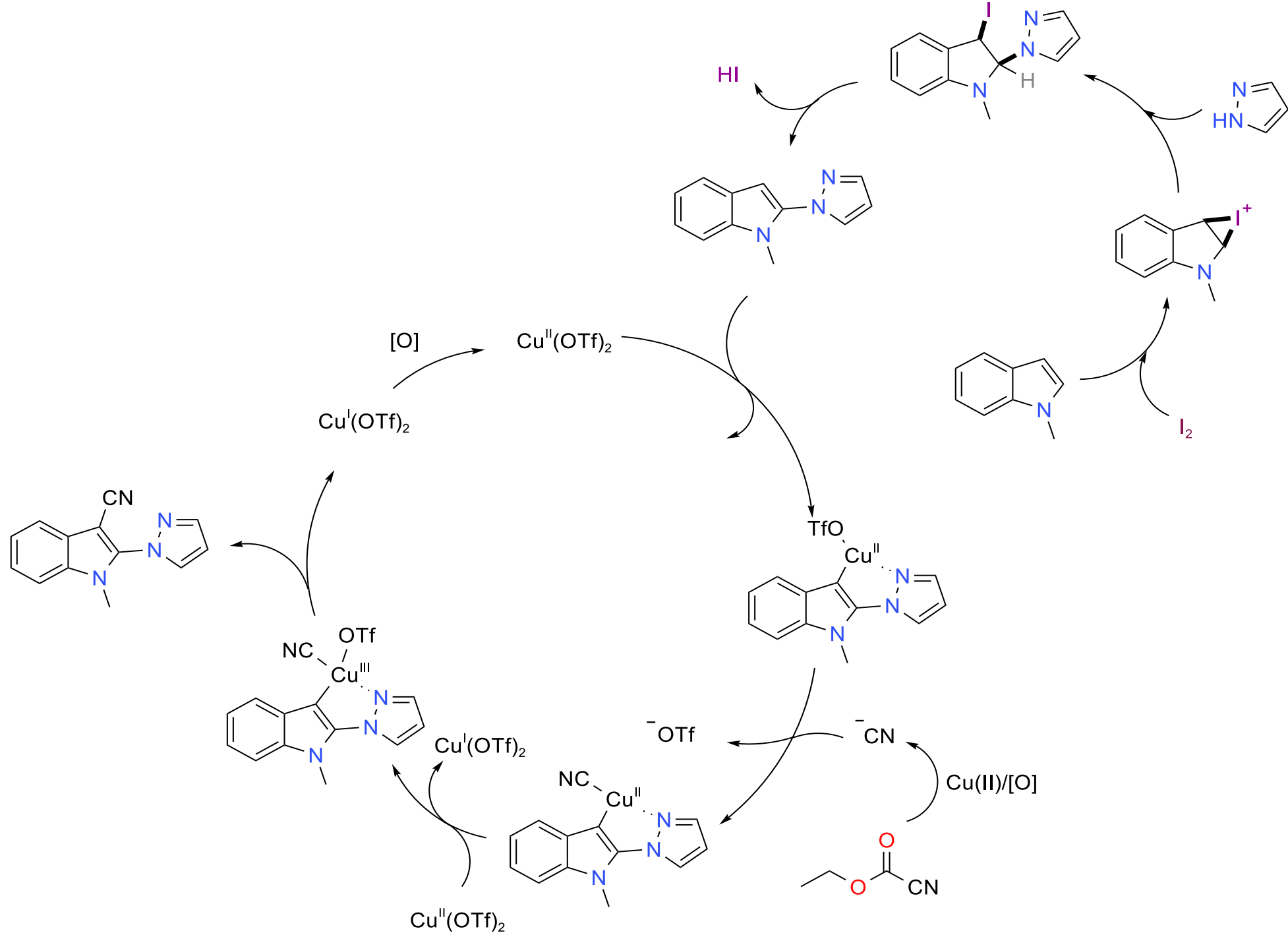


[2,3]-sigmatropic rearrangement

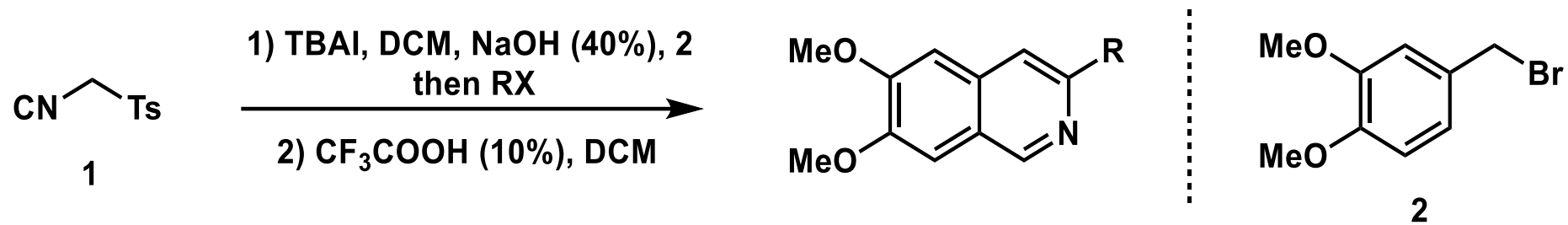
2.



J. Org. Chem., **2022**, 87, 12424.



3.



Org. Lett., **2015**, *17*, 78.

