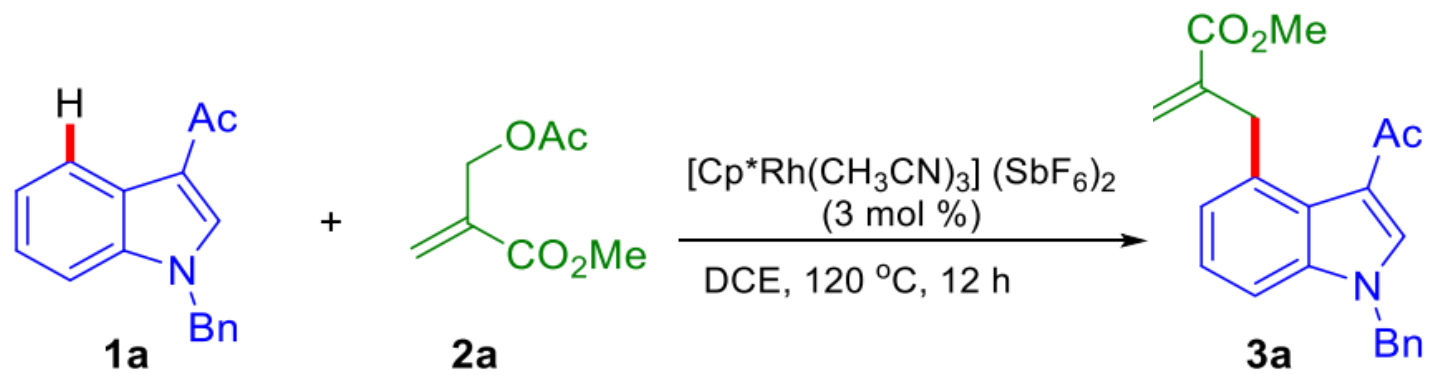
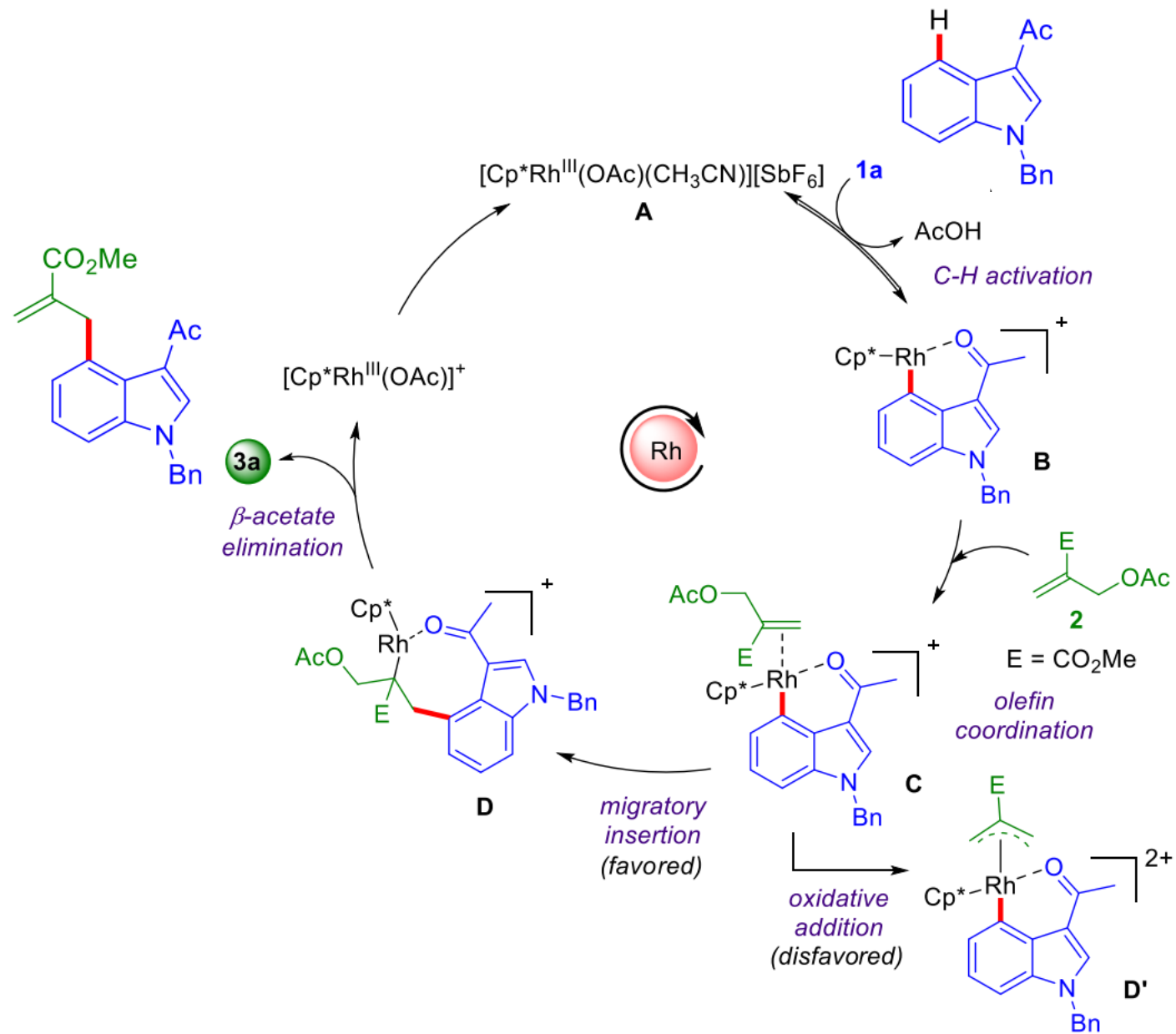


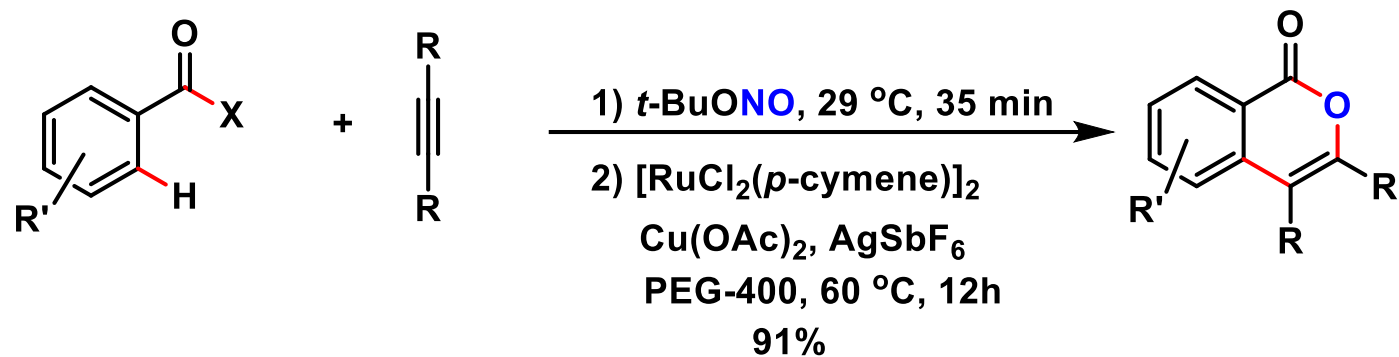
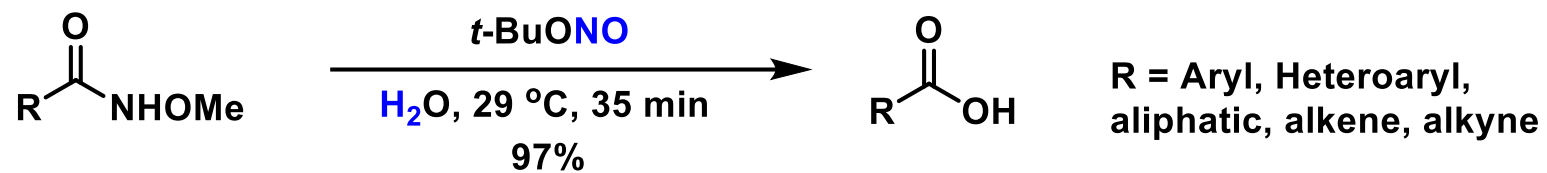
1.



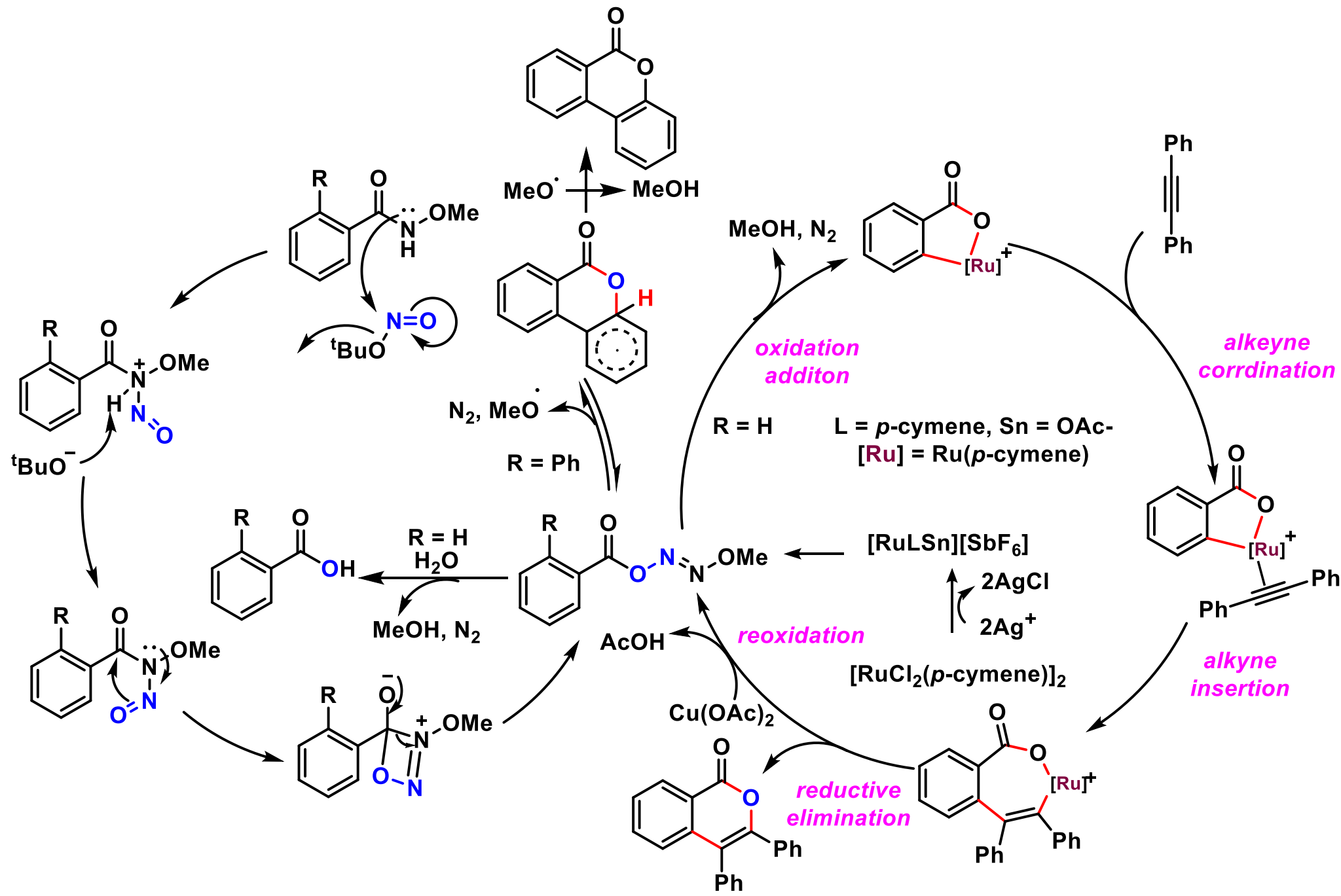
Org. Lett., **2019**, *21*, 9898.



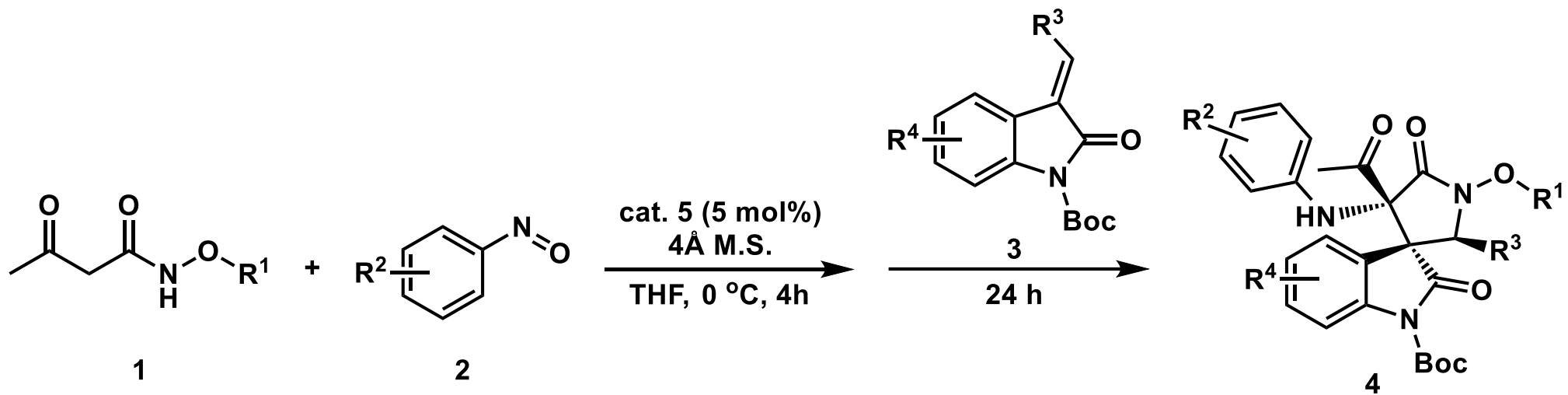
2.



J. Org.Chem., **2017**, *82*, 5769.



3.



$\text{R}^1 = \text{Et}, \text{R}^2 = \text{R}^4 = \text{H}, \text{R}^3 = \text{COOMe}$
 78%, 10:1 *d.r.*, > 99% *e.e.*

