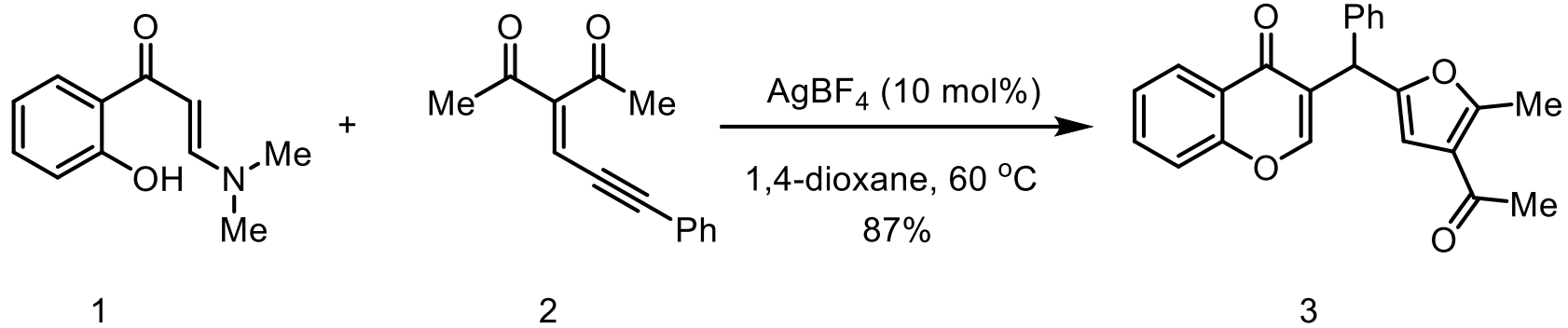
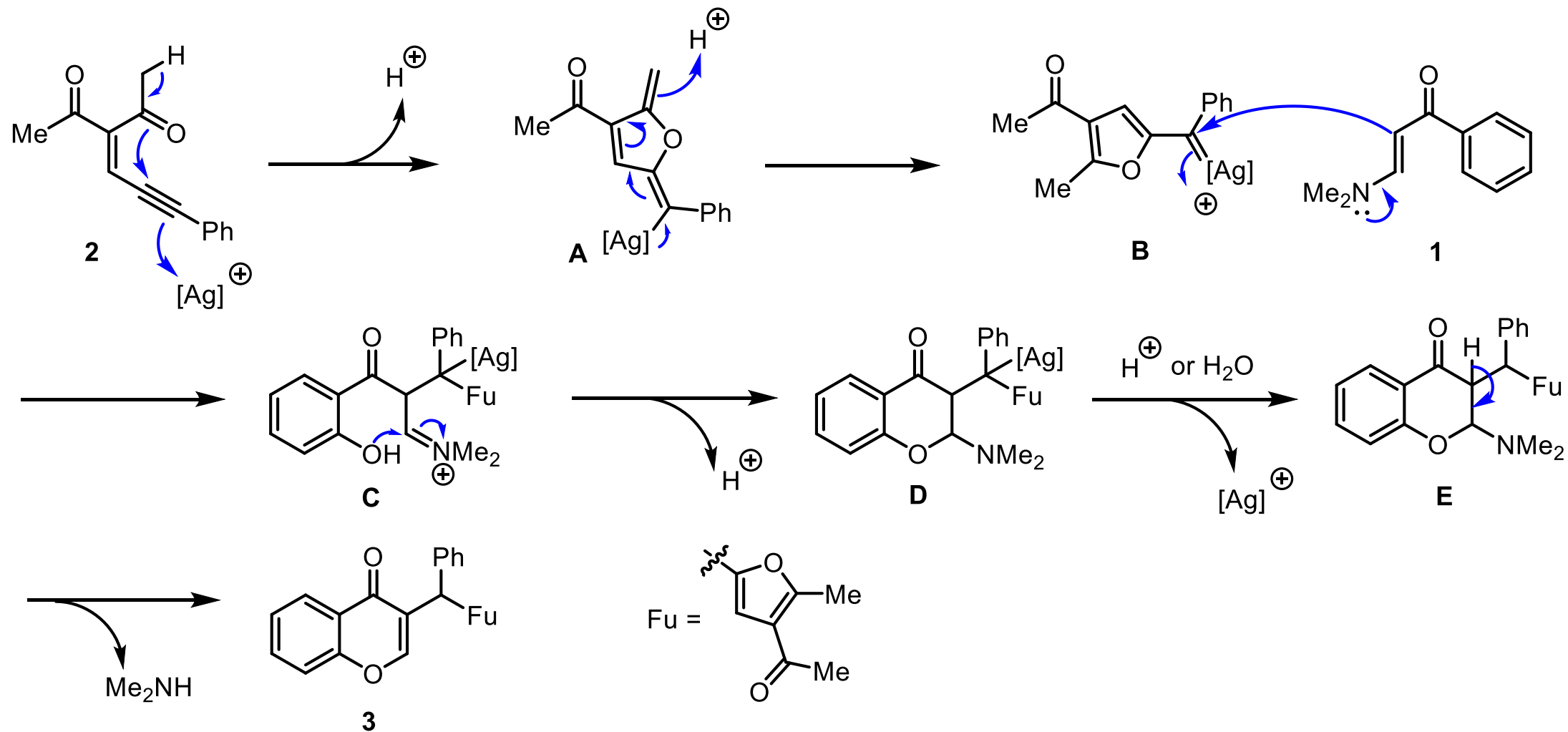


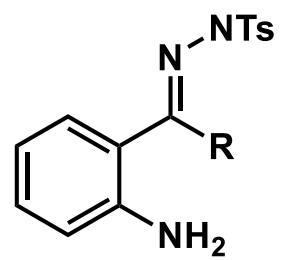
1.



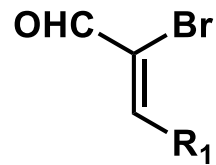
Adv. Synth. Catal., **2024**, 366, 1.



2.

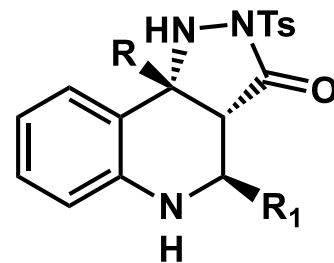


+

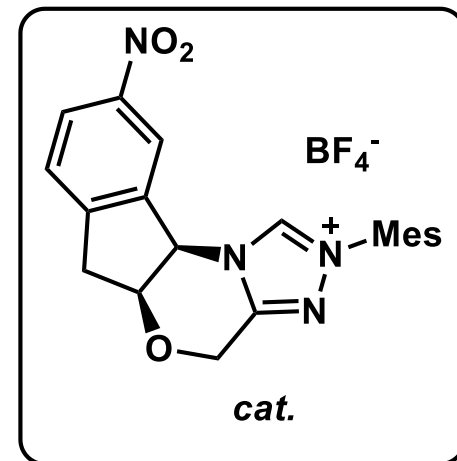


cat. (10 mol%)
Cs₂CO₃ (2.0 equiv)
LiOAc (20 mol%)

PhCl, 4 Å MS
25 °C, 36 h



up to 95% yield, *d.r.* > 20:1, and > 99% e.e.



Org. Lett., **2023**, *25*, 220.

